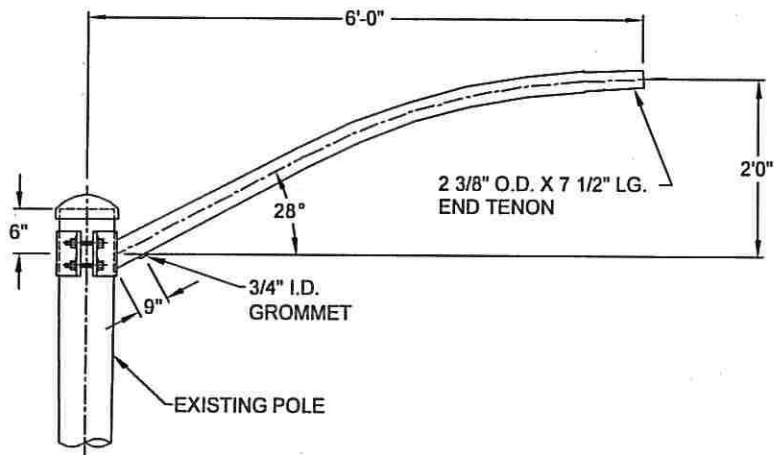
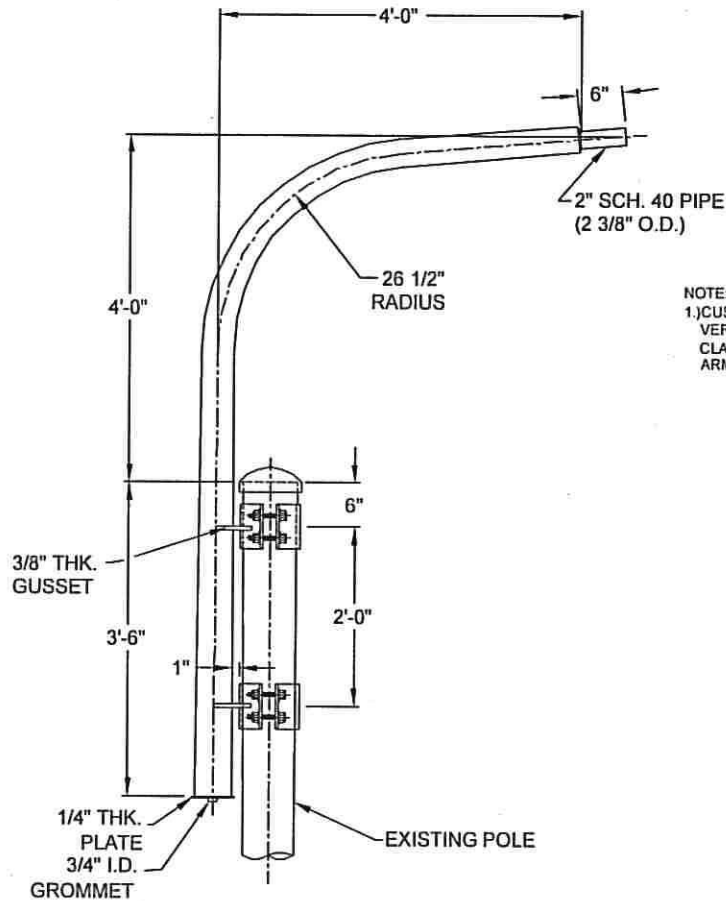


**TYPICAL CLAMP**



**"N" STYLE CLAMP-ON ARM**



**"JS" STYLE CLAMP-ON ARM**

--GENERAL NOTES--

MATERIAL SPECIFICATIONS

|                         |  |
|-------------------------|--|
| SHAFTS                  | STEEL OF 48,000 PSI MINIMUM YIELD AFTER FABRICATION. |
| BASISPLATES AND FLANGES | ASTM A-36  |
| PIPE                    | ASTM A-53-GR.B                                       |

FINISH COATING

|           |                                  |
|-----------|----------------------------------|
| STRUCTURE | HOT DIP GALVANIZE PER ASTM A-123 |
| HARDWARE  | HOT DIP GALVANIZE PER ASTM A-153 |

DESIGN CRITERIA

|                        |  |
|------------------------|--|
| STRUCTURE AND HARDWARE | IN ACCORDANCE WITH THE "SPECIFICATIONS FOR STRUCTURAL SUPPORTS OF HIGHWAY SIGNS, LUMINAIRES AND TRAFFIC SIGNALS," AASHTO 1994. |
| WELDING                | IN ACCORDANCE WITH LATEST EDITION OF AWS D1.1 WELDING CODE.  |

NOTE:  
1.) CUSTOMER MUST SUPPLY POLE TYPE, VERIFY POLE TOP DIAMETER, AND TOP CLAMP ELEVATION WHEN ORDERING ARMS.

| MATERIAL LIST |             |
|---------------|-------------|
| QTY.          | DESCRIPTION |
|               |             |
|               |             |
|               |             |
|               |             |
|               |             |
|               |             |
|               |             |
|               |             |
|               |             |
|               |             |

|                     |                           |
|---------------------|---------------------------|
| AGENCY:             | CITY/COUNTY SAN FRANCISCO |
| PROJECT:            |                           |
| DISTRIBUTOR:        |                           |
| CONTRACTOR:         |                           |
| CUSTOMER ORDER NO.: |                           |
| AMERON NO.:         |                           |

| REV | DATE | DESCRIPTION | BY | APPR |
|-----|------|-------------|----|------|
|     |      |             |    |      |
|     |      |             |    |      |

**AMERON** POLE PRODUCTS DIVISION  
**CITY/COUNTY SAN FRANCISCO**  
**CLAMP-ON LUMINAIRE ARMS**  
 DRAWN: EJ DATE: 4/05 SCALE: ENG. NO. REV.  
 APPR.: DATE: 4/05 **SF0105** -