



**Transform  
the Storm**

# Green Infrastructure Grants for Homes

## Pilot Program Workshop

San Francisco Public Utilities Commission

March 2025



Post in the chat -  
your first name,  
neighborhood and  
favorite flower!

# Pilot Program Delivery Team

---

**Transform  
the Storm**



**Will  
Logsdon**

Program  
Manager



**Yajaira  
Duran**

Program  
Coordinator



**Meg  
Kalaw**

Program  
Support



**Nora  
Kusaka Herrero**

Program  
Administrator

1) Workshop recording

- A recording of this virtual workshop will be posted to the website
- A PDF of the slide deck will also be posted

2) Asking questions

- Submit your questions in the Q&A box (not the chat box) at any time
- We will have about 15 minutes for questions at the end

3) Poll questions

- Will be scattered throughout

# Workshop Goals

---

Transform  
the Storm

- Understand the scope of the Green Infrastructure Grants for Homes pilot program
- Understand the purpose of the pilot program
- Answer any questions you have on the process
- Provide guidance on making the best decision for your household

# Workshop Agenda

---

Transform  
the Storm

- 1) About the SFPUC
- 2) About Green Infrastructure
- 3) Pilot Program Summary
- 4) Next Steps
- 5) Questions

# Poll Question 1

---

Transform  
the Storm

**How familiar are you with  
Green Infrastructure?**

Not Familiar (0) – Expert (5)



# Transform the Storm

# Introduction

---



# About the SFPUC



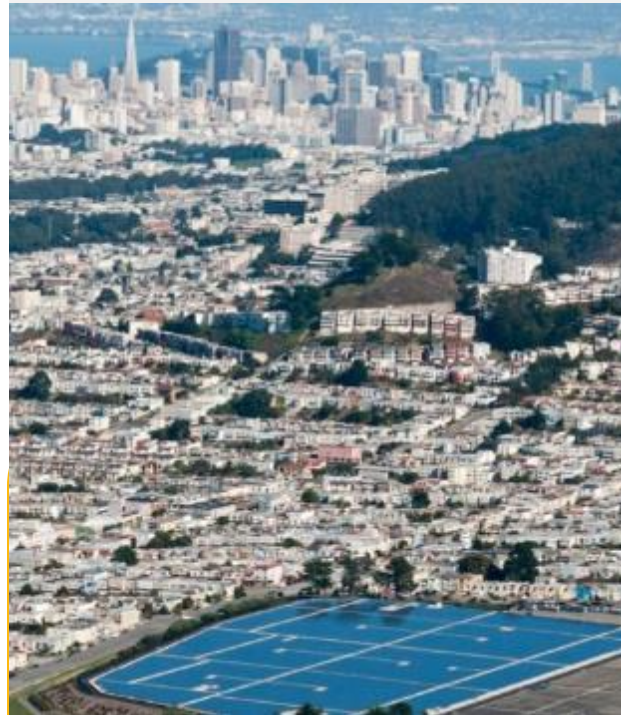
**Transform  
the Storm**

## Water



**Delivering High Quality  
Water Every Day**

## Power



**Generating Clean Energy  
For Vital City Services**

## Sewer

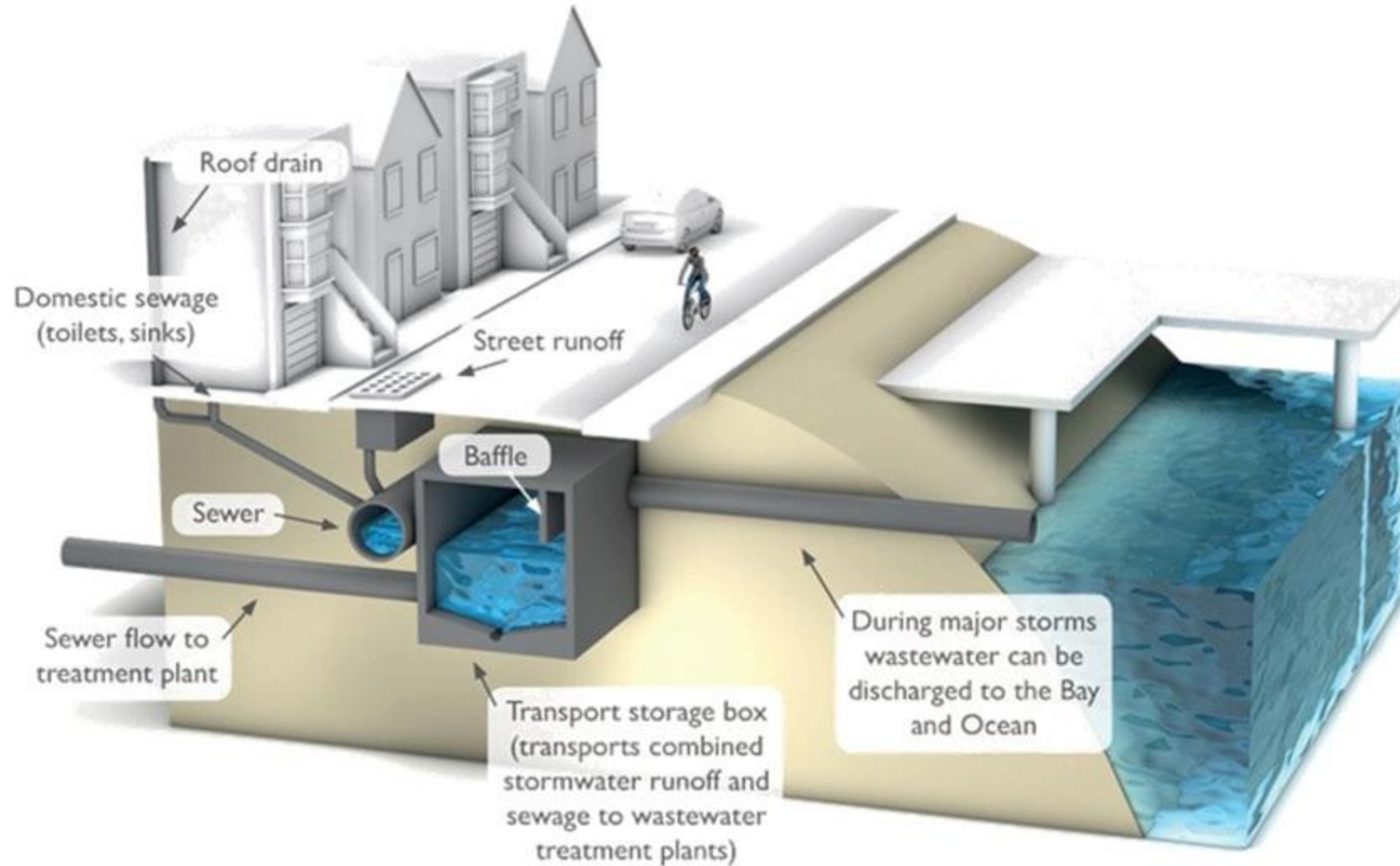


**Protecting Public Health  
and the Environment**



# About Stormwater Runoff

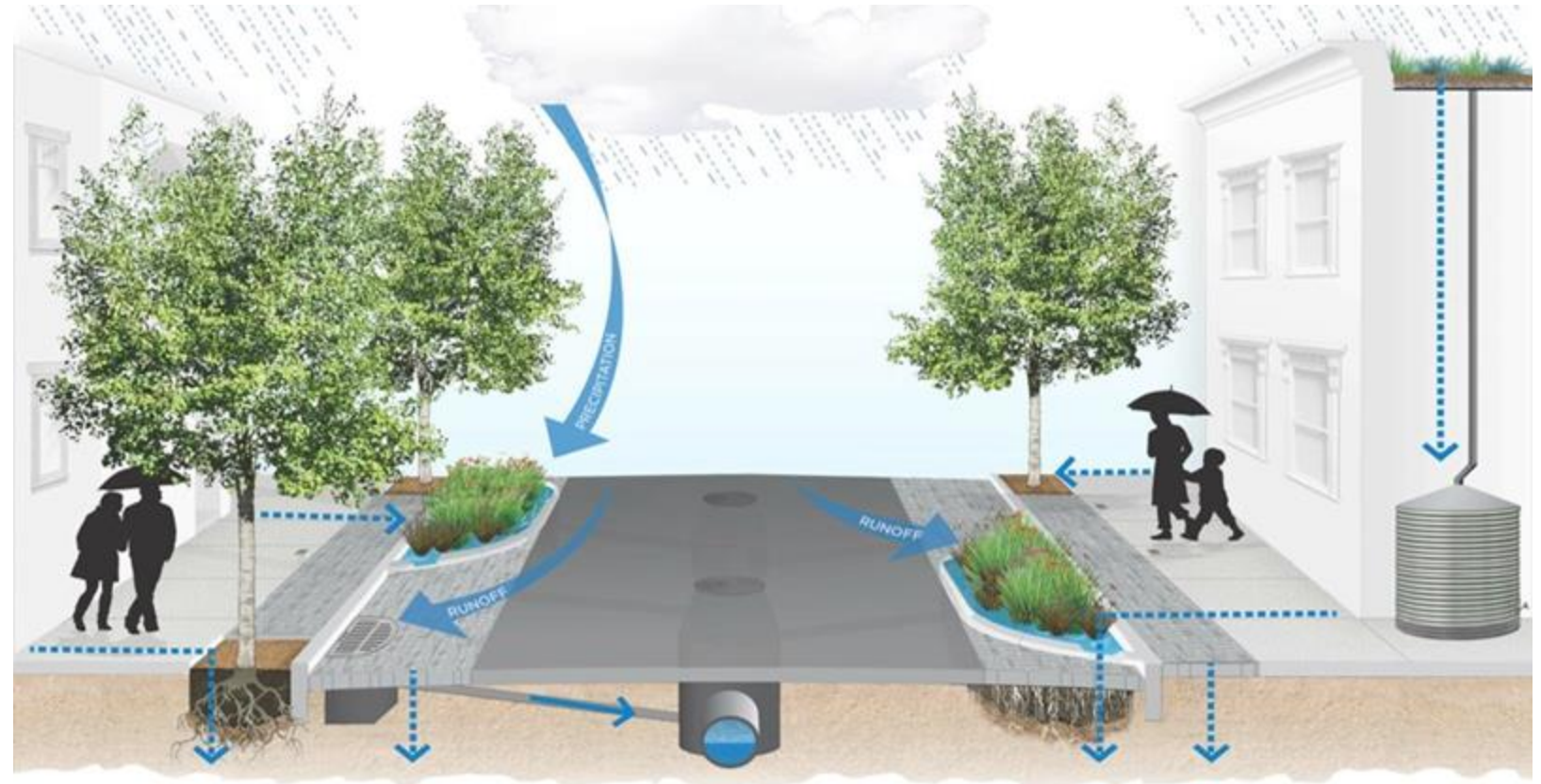
**Transform  
the Storm**



# About Green Infrastructure

**Transform  
the Storm**

**Green Infrastructure** acts like a sponge to capture stormwater before it enters our city's sewer system. This reduces the burden on our combined sewer system during heavy storms and removes pollutants picked up from streets before they reach our waterways.



# Transform the Storm!

## Transform the Storm

**Transform the Storm** is a city-wide effort to protect our surrounding waters, become more resilient to climate change, and beautify our neighborhoods through sustainable stormwater management practices.

### AVAILABLE SFPUC PROGRAMS:

- GREEN INFRASTRUCTURE GRANTS FOR HOMES
- GREEN INFRASTRUCTURE GRANTS
- URBAN WATERSHED STEWARDSHIP GRANTS
- COMMUNITY ASSISTANCE PROGRAM (CAP)
- RAINWATER HARVESTING PROGRAM
- FLOODWATER GRANTS
- ADOPT A DRAIN SF
- RAIN GUARDIANS

Find more details and a full list of programs at [sfpuc.gov](http://sfpuc.gov)





# Rain Gardens



Philadelphia, PA



Philadelphia, PA



Seattle, WA

## Transform the Storm

### Benefits



Pollinator Habitat



Beautification



Slow down and filter stormwater



Groundwater Recharge



# Infiltration Trenches

---

GI Grants Pilot Project, 2025



## Transform the Storm

### Benefits



Pollinator  
Habitat



Beautification



Slow down and  
filter stormwater



Groundwater  
Recharge



# Permeable Pavement



GI Grants Pilot Project, 2025



GI Grants Pilot Project, 2025



## Transform the Storm

### Benefits



Beautification



Slow down and filter stormwater



Groundwater Recharge



# Rainwater Harvesting Cisterns

GI Grants Pilot Projects, 2024-2025:



## Transform the Storm

### Benefits



Water reuse



Slow down and  
filter stormwater



**Transform  
the Storm**

# Pilot Program Summary





# Program Goals

---

**Transform  
the Storm**

The goals of the pilot program are to reduce the amount of stormwater runoff entering the sewer system and to lower the stormwater portion of our customers' sewer service charge.

# Stormwater Credits

---

The SFPUC updated their water and sewer rates, as well as the way sewer rates are calculated. The new rate structure splits the sewer portion of the bill into two parts: a wastewater component and a **stormwater component**.

The SFPUC now provides a **stormwater credit** to customers that capture stormwater on their property using green infrastructure to help improve the performance of the sewer system.

## KEY POINTS

- To receive a stormwater credit, you will need to maintain your property's green infrastructure.
- The SFPUC will provide training so you know how to maintain your features.
- The SFPUC requires **proof of maintenance each year** to continue qualifying for the stormwater credit. This may include scheduled visits.

## Transform the Storm

For more information on the Stormwater Component and Credits, visit [stormwater.sfpuc.org](https://stormwater.sfpuc.org)



# Project Selection

---

Applications will be reviewed on a **first come, first serve** basis

Projects will be selected based on **location** and **project type**:

- Equally distributed between eligible westside and eastside zip codes
- Subject to availability of funds



## Transform the Storm

Our goal is to reach out to our first pool of possible participants a few weeks after this workshop to set up consultation calls.

# Pilot Program Basics

---



There are **no costs** to participate in the pilot program (other than potential tax obligations for receiving a grant).



Project types can include rain gardens, permeable pavement, rainwater harvesting (cisterns) and infiltration trenches.



The pilot program administrator, Greenprint Partners, will provide a property assessment, concept design, and engineering design services at no cost to the homeowner.



We will issue upfront payments to pay for construction services (50% upfront and 50% at the end as will be required by the contractor).

# Eligible & Ineligible Costs

---

Transform  
the Storm

## Eligible Costs:

The cost of construction services incurred by your selected contractor(s).

All project costs related to the construction of the proposed green infrastructure features are eligible for grant funding.

## Ineligible Costs:

Non-green infrastructure project elements, such as furnishings or decorative items.

# Tax Implications

---

Transform  
the Storm



**TAXES:** A grant counts as income and therefore **may be taxable**. It is the responsibility of the homeowner to determine whether a tax liability exists. If you are selected to participate in the program, you will be receiving a 1099 MISC tax form from Greenprint Partners.

# The Process

---

**Transform  
the Storm**





# The Process

Transform  
the Storm



- 1. Application:** is where we will gather information such as property location and project preferences.
- 2. Consultation Call:** to further discuss your interest and answer any questions.

**YOU ARE HERE.**

# The Process

Transform  
the Storm



1. **Letter of Intent:** to signal your commitment to completing the project.
2. **Opportunity Evaluation:** to visit your property and look for green infrastructure opportunities.

**NOTE:** the Property Opportunity Evaluation may reveal that your site is not eligible or that the construction of green infrastructure facilities is not possible.

# The Process

Transform  
the Storm



1. **Plan:** will be created by our team based on your preferences and the site assessment.
2. **Meet with our Team:** to review your green infrastructure plan and provide your feedback and approval.

# The Process

Transform  
the Storm



- 1. Request Bids:** you will be responsible for requesting bids from qualified contractors.
  - The SFPUC will provide a vendor list and tips for comparing prices.
  - We recommend that you receive at least two bids for your project.
- 2. Final Approval and Subgrant Agreement:** After SFPUC approves the project, you will sign a subgrant agreement with Greenprint Partners.
- 3. 50% Funds:** Greenprint will send you the first 50% of your project funds upfront so you can hire your contractor and begin construction.

# The Process

Transform  
the Storm



1. **Inspection:** After construction, the SFPUC will inspect your green infrastructure features and will issue a **Project Completion Notification**



2. **50% funds:** Greenprint will send you the remaining funds to finish paying your contractor.

3. **Maintenance:** You will receive training and a **Green Infrastructure Maintenance Guidebook** to help keep your green infrastructure in good condition.

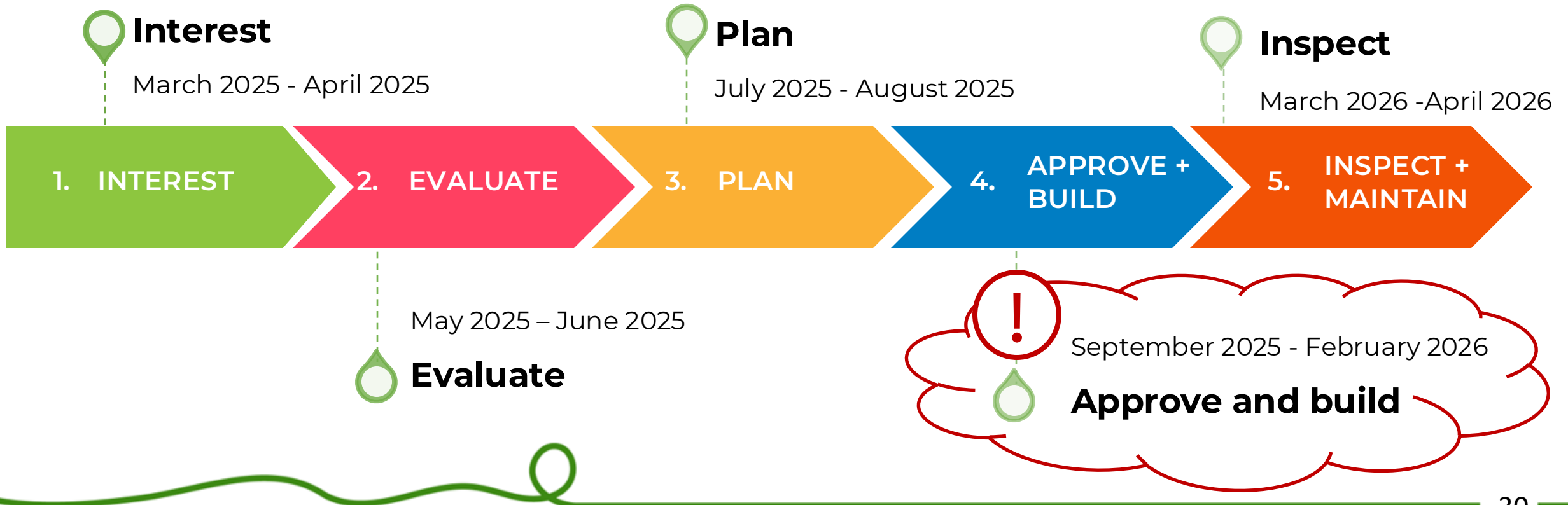
*Upon completion you will qualify for a **stormwater credit** on your sewer bill!*

# Project Timelines



**TIMELINE:** Projects can take **1 to 2 years** from initial interest to construction completion.

Timelines will depend on factors such as the time needed to secure an acceptable bid, permitting, material availability, contractor capacity, and weather.



# Homeowner Time Commitment

## Interest (~2-3 hours)

- Attend workshop
- Participate in consultation call

## Evaluate (~3-4 hours)

- Review and sign letter of intent
- Attend property assessment site visit

## Plan (~3-4 hours)

- Review draft concept designs
- Meet with the team to finalize concept design

## ! Approve and Build (~10-15 hours)

- Reach out to contractors to request bids
- Review and sign subgrant agreement
- Coordinate with selected contractor during construction

## Maintain and Inspect (~1-2 hours)

- Attend final inspection and maintenance training
- Regular and annual maintenance

## Transform the Storm

Expect ~2-3 hours of time commitment per month, with an uptick during contractor outreach.

For more information on annual maintenance, please review the GI Maintenance Guidebook on our website.



# Transform the Storm

## Next Steps

---





# Application and Next Steps

Transform  
the Storm

- Application will be released on our website on **Monday, March 31, 2025, at 12:00pm**
- The application will be submitted online via a MS Form with relatively simple questions such as Green Infrastructure preferences and property characteristics.


The screenshot shows the San Francisco Water Power Sewer website. The header includes the logo and navigation links for My Account, Careers, 中文, Español, Tagalog, and Translate. The main navigation bar lists Accounts & Services, Programs, Learning, Construction & Contracts, and About Us. The breadcrumb trail reads Home / Programs / Grants / Green Infrastructure Grants for Homes. A left sidebar menu lists various grant programs, with 'Green Infrastructure Grants for Homes' highlighted. The main content area features a 'Pilot Program Status' section with a yellow border, stating that the pilot program has been extended and users should sign up for an interest list. Below this is a 'Program Overview' section explaining the SFPUC's goal to reduce stormwater runoff and lower sewer service charges through various green infrastructure projects. A 'Benefits' section lists advantages like managing stormwater, reducing sewer charges, and supporting pollinator habitats. An image of a backyard rainwater harvesting system and rain garden is shown on the right, with a caption identifying it as a pilot program participant.

**Reminder:** applications will be reviewed on a **first come, first serve basis** based on the eligibility criteria

# Application

## Transform the Storm

English (United States) ▾

 **GI Grants for Homes Application**  
Services of the San Francisco Public Utilities Commission

The GI Grants for Homes Pilot Program has been extended. Please fill out this application to be considered for the GI Grants for Homes Program. To be eligible, the project must be located on a residential property in San Francisco that:

1. Is located within the the (4) Eligible Zip Codes: **94122, 94116, 94124, and 94134**
2. Is a single-family home or small apartment with 6 or fewer units
3. Is serviced by an active SFPUC water and sewer account

Please note, if you applied in a previous cycle or filled out the Interest Form, you must reapply with this Application form. If you have any questions, please contact us at [GIhomes@sfgwater.org](mailto:GIhomes@sfgwater.org).

\* Required


1  
Full name \*


Enter your answer


2  
Address \*


Enter your answer

11  
What type of green infrastructure are you interested in? Select all that apply. \*

  Permeable Pavement has small gaps between the pavers to allow water to seep through and into the soil. Permeable Pavement can be installed to replace hardscape (such as concrete) in back paved patio areas or front driveways.

  Rain Harvesting Cisterns attach to your downspout and collect rainwater from your roof. The harvested rainwater can then be used to water your garden. This can be used in the front or backyard where there is landscaping to irrigate.

  Rain Gardens are basins filled with plants and soil that collect water from surrounding areas and allow it to absorb into the ground. Rain gardens can be located in the front or backyard.

  Infiltration Trenches are cobble swales that collect water from surrounding areas and allow it to absorb into the ground.

12  
Please rank your preference for the type of green infrastructure you are interested in.

Permeable Pavement

Rain Gardens

Infiltration Trenches

Rainwater Harvesting Cisterns

# Website Resources

---

**Transform  
the Storm**

- [Factsheet \(Spanish, Chinese, Filipino\)](#)
- [Program Guidelines](#)
- [Maintenance Guidebook](#)
- [Residential Green Infrastructure Design Guidance](#)
- [Residential Green Infrastructure Typical Details](#)
- [Interested Contractor List](#)

[\*\*https://sfpuc.gov/programs/grants/green-infrastructure-grants-homes\*\*](https://sfpuc.gov/programs/grants/green-infrastructure-grants-homes)



# Transform the Storm

# Wrap Up

---



## Poll Question 2

---

Transform  
the Storm

**After this presentation, how familiar would you say you are with green infrastructure (GI)?**

Not familiar 0 – 5 Expert

# Poll Question 3

---

What is the most important part of this pilot program to you?

- Supporting the pollinator habitat
- Decreasing your stormwater component
- Beautifying your property
- Reusing rainwater for irrigation

## Poll Question 4

---

Transform  
the Storm

**What are you most excited about in the process?**

# Poll Question 5

---

Transform  
the Storm

**What are you most concerned about in the process?**





# Transform the Storm

## Q & A

---



Other Questions? Reach out to  
[gihomes@sfwater.org](mailto:gihomes@sfwater.org)