



San Francisco
Water
Power
Sewer

Services of the San Francisco
Public Utilities Commission

**SEWER
SYSTEM**

IMPROVEMENT PROGRAM
Grey. Green. Clean.

11.03.2021

WW-711 Wawona Area Stormwater Improvements Project

Vincent Mazzaferro, Communications Associate

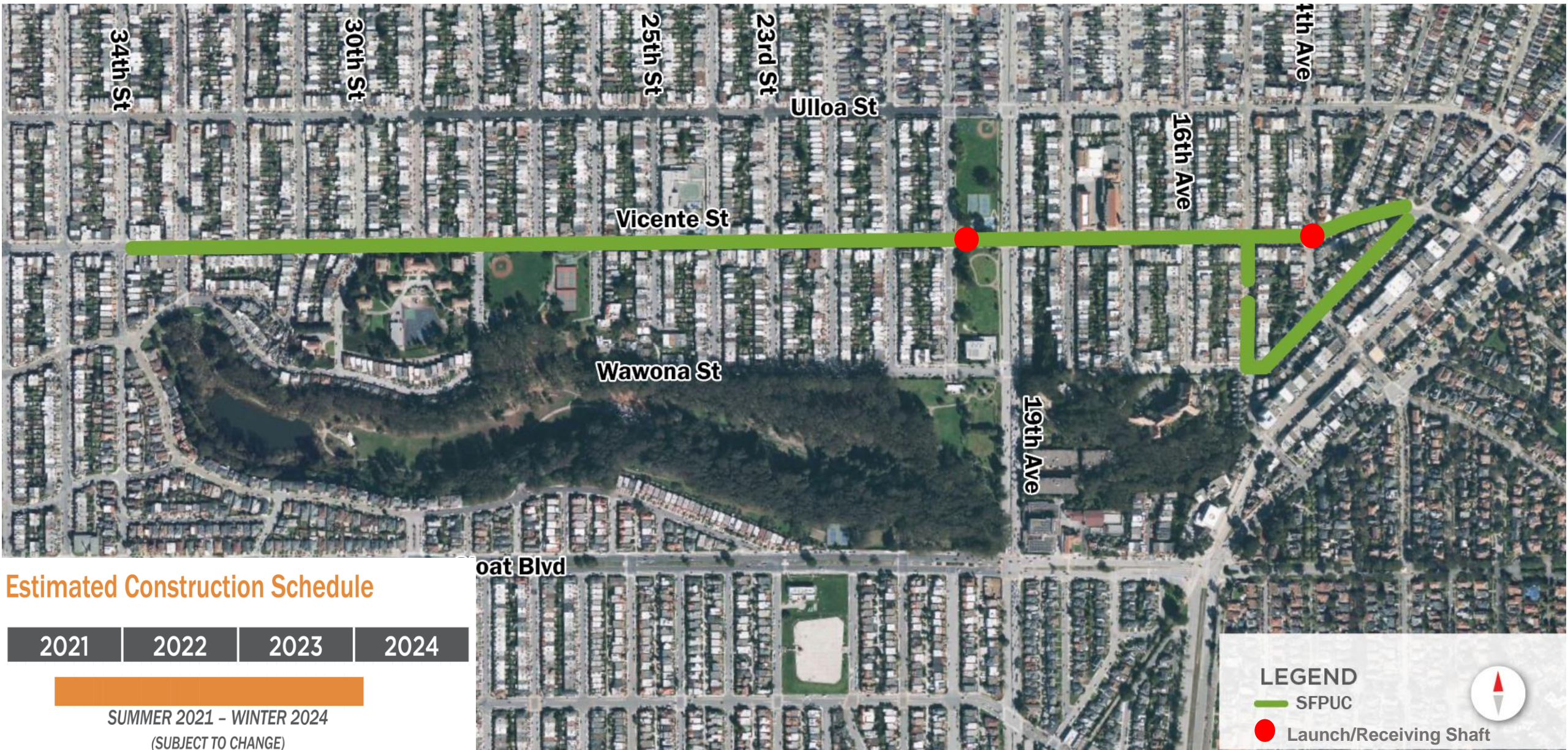
Project Update

1. Project scope and schedule
2. Staging areas
3. Impacts on traffic, parking, and pedestrians
4. Coordination with other projects (19th Ave and L Taraval)

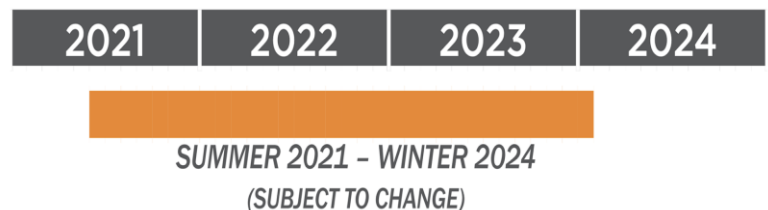


Wawona & Vicente Stormwater and Water System Upgrades

Flood Resilience and Potable Emergency Firefighting Water Supply System Improvements



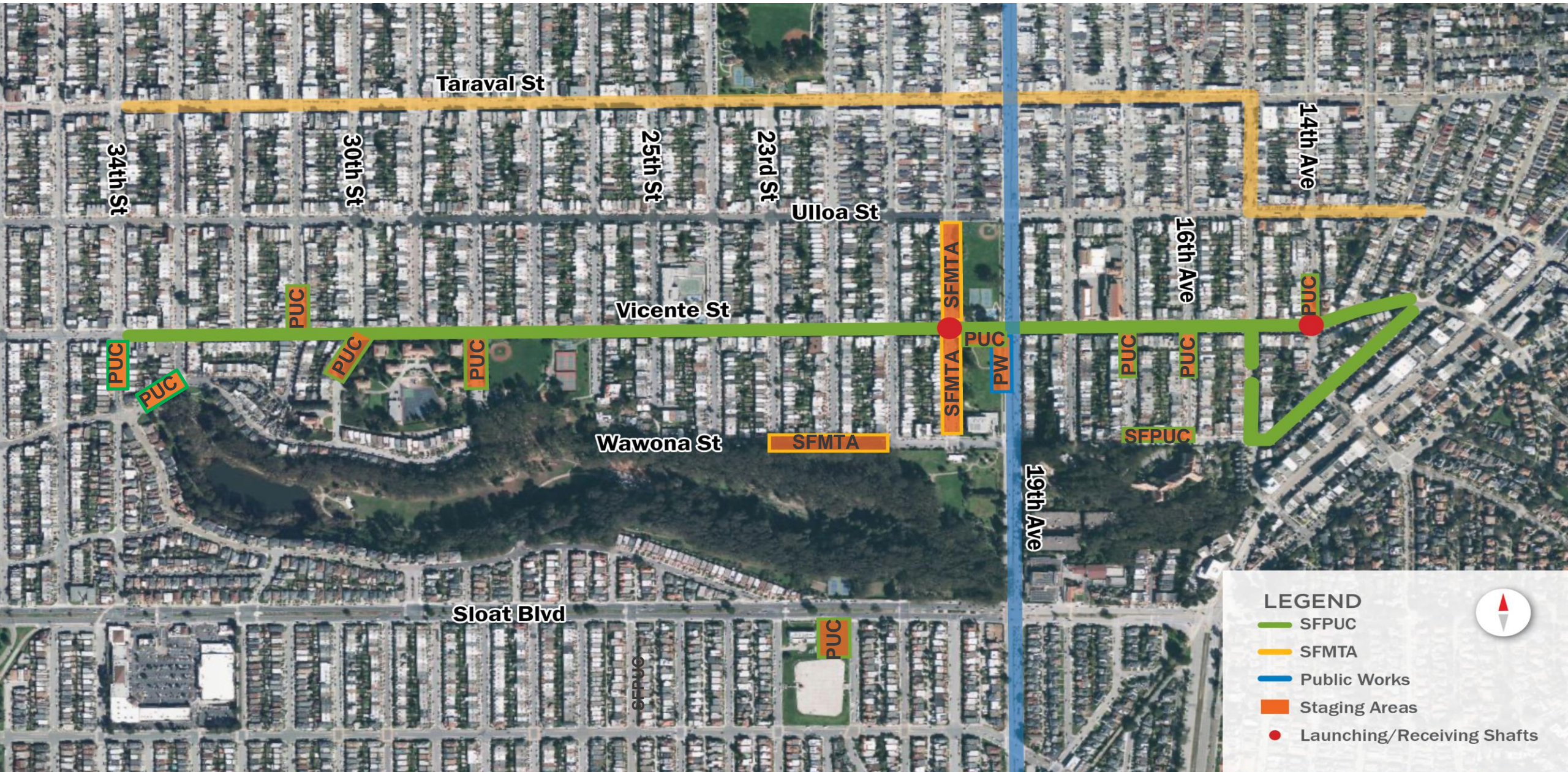
Estimated Construction Schedule



LEGEND

- SFPUC
- Launch/Receiving Shaft

Other Projects and Staging



Sewer Junction Work Near 15th & Wawona

Key elements of construction & staging

Completed

- 14th & Vicente sewer structure and manhole improvements

Now - November 14

- 15th & Wawona demolished sewer junction structure and constructed larger manhole structure
- Replace manhole, open cut sewer to connect junction structure
- Recent heavy rain events did not result in flooding issues at intersection

Post Wet Weather Season: May 2022

- East of 15th & Wawona, two stormwater inlets to be constructed
- North of 15th & Wawona, two stormwater inlets constructed

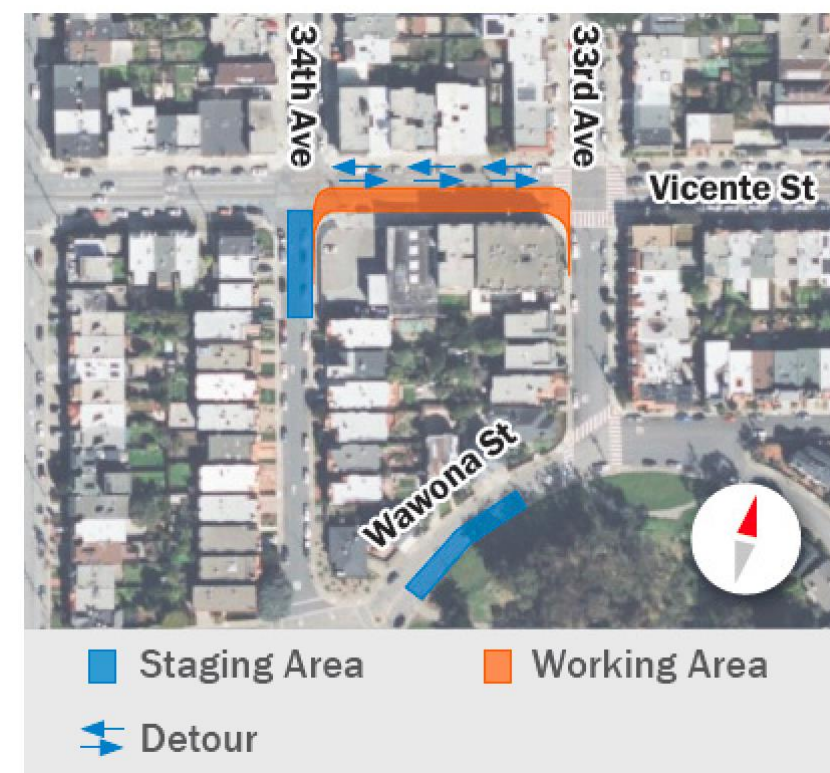


Sewer Upgrades from 34th Eastward

Key elements of construction & staging

November 1

- Cut and cover sewer line work between 34th – 20th avenues, one block of construction for 2-3 weeks at a time
- Maintain one lane traffic both directions along Vicente
- Parking restrictions with advanced notice (access to driveways maintained)



Staging Areas for Project

Key elements of construction & staging for launch/receiving shafts

December/January**

- Anticipated 12-14 months duration
- Trenchless work between 20th/14th avenue
- Maintain one lane traffic both directions along Vicente **
- Parking restrictions with advanced notice (access to driveways maintained)
- No left turn from east bound Vicente onto northbound 19th Avenue

**** Coordination on Traffic Control Plan underway**



Staging Areas for Project

Key elements of construction & staging for launch/receiving shafts

December/January**

- Anticipated 12-14 months duration
- Trenchless work between 20th/14th avenues
- Maintain one lane traffic both directions along Vicente
- Parking restrictions with advanced notice (access to driveways maintained)

**** Coordination on Traffic Control Plan underway**



Staging Areas for Project

Key elements of construction & staging

PROJECT MAP



Sloat Blvd

Entrance/Exit

STAGING
AREA

24th Ave

23rd Ave

22nd Ave

21st Ave

Coordination with Other Project

SFMTA L-Taraval Project and Public Works 19th Avenue Project

- Staging/construction sites
- Outreach to community
- Timing of work activities when in proximity

