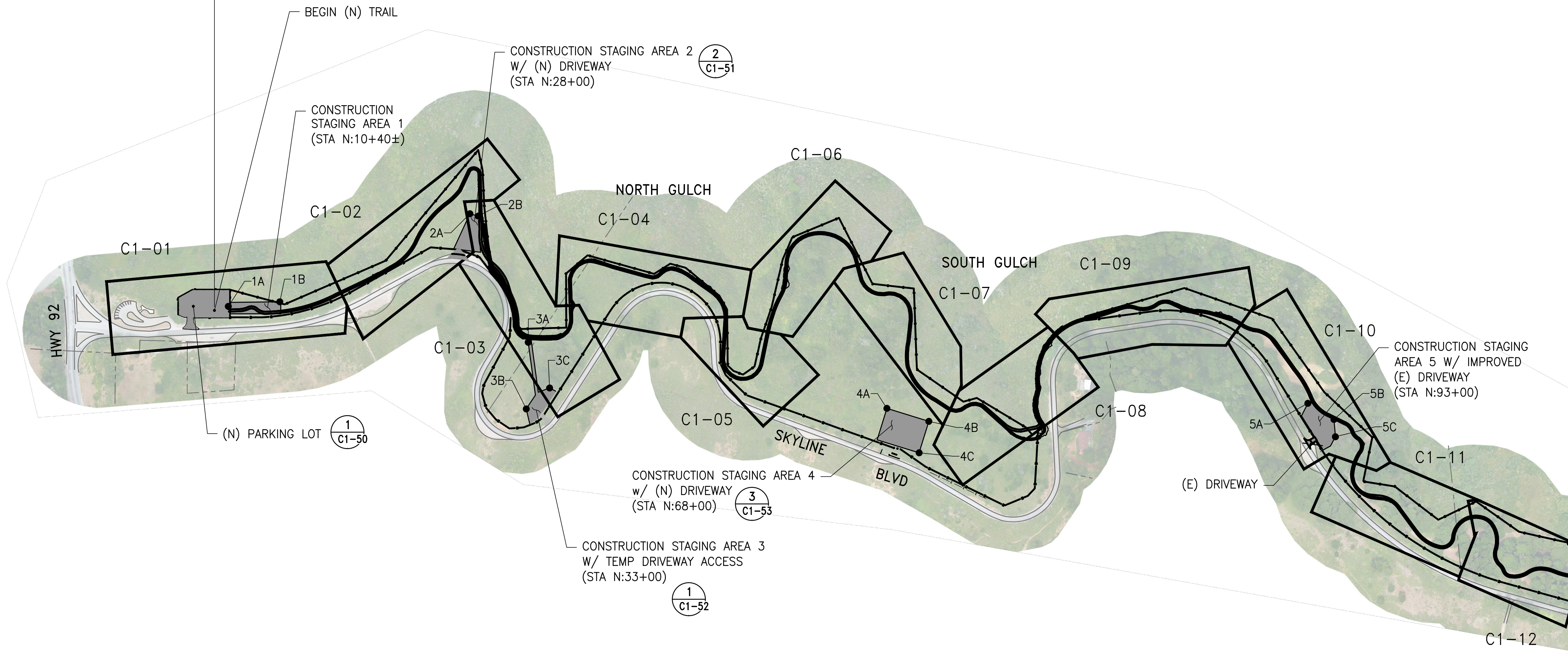


ALIGNMENT-N-NORTH SEGMENT
STA N:10+40 TO STA N:111+34±

CONSTRUCTION STAGING AREA LAYOUT

STATION	POINT	NORTHING	EASTING
N:10+40±	1A	2007774.3813	6019989.8805
	1B	22007590.9166	6020136.2448
N:28+00	2A	2007093.1363	6020951.6165
	2B	2007055.9852	6020963.7875
N:33+00	3A	2006547.0015	6020611.5492
	3B	2006385.9905	6020353.8712
	3C	2006350.3593	6020492.3462
N:68+00	4A	2005020.8173	6021267.3761
	4B	2004829.1020	6021324.3432
	4C	2004786.3767	6021180.5568
N:93+00	5A	2003438.3964	6022350.4682
	5B	2003298.6654	6022355.3554
	5C	2003249.3898	6022293.3865



KEY PLAN - NORTH SEGMENT
SCALE: 1" = 300'

NOTES:

- CONSTRUCTION STAGING AREAS TO BE CLEARED AND GRUBBED AS NEEDED. TREES TO BE PROTECTED IN PLACE WHERE FEASIBLE. AT PROJECT COMPLETION, CONSTRUCTION STAGING AREAS SHALL BE RESTORED AND SEEDED AS REQUIRED IN THE CONTRACT DOCUMENTS.

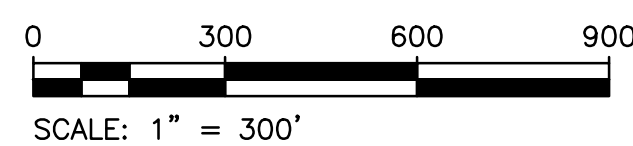
CONTRACT NO. WD-2840

CITY AND COUNTY OF SAN FRANCISCO
PUBLIC UTILITIES COMMISSION
INFRASTRUCTURE DIVISION
ENGINEERING MANAGEMENT BUREAU

SOUTHERN SKYLINE BOULEVARD
RIDGE TRAIL EXTENSION

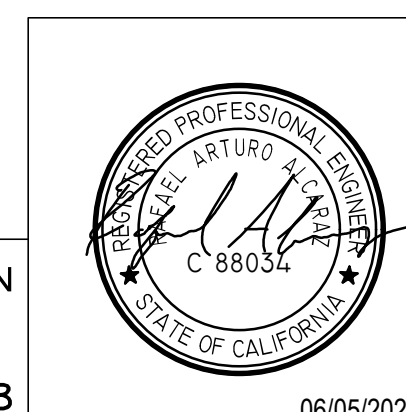
KEY PLAN - NORTH SEGMENT

CHECKED / APPROVED	AB / AB	DRAWN	DM
SECTION MANAGER	CH	DESIGNED	RA
SCALE	AS SHOWN	DATE	MAY 2023
APPROVED	<i>[Signature]</i>	APPROVED	<i>[Signature]</i>
MANAGER, ENGINEERING MANAGEMENT BUREAU		MANAGER, NATURAL RESOURCES & LAND MGMT. DIV.	
PLAN NO.	C1-00-N	DRAWING / FILE NO.	E-32893
		REVISION NO.	0



FOR THE SOLE USE OF THE DOCUMENT
RECIPIENT - DO NOT CITE, COPY, OR
CIRCULATE WITHOUT THE EXPRESSED
PERMISSION OF THE SFPUC.

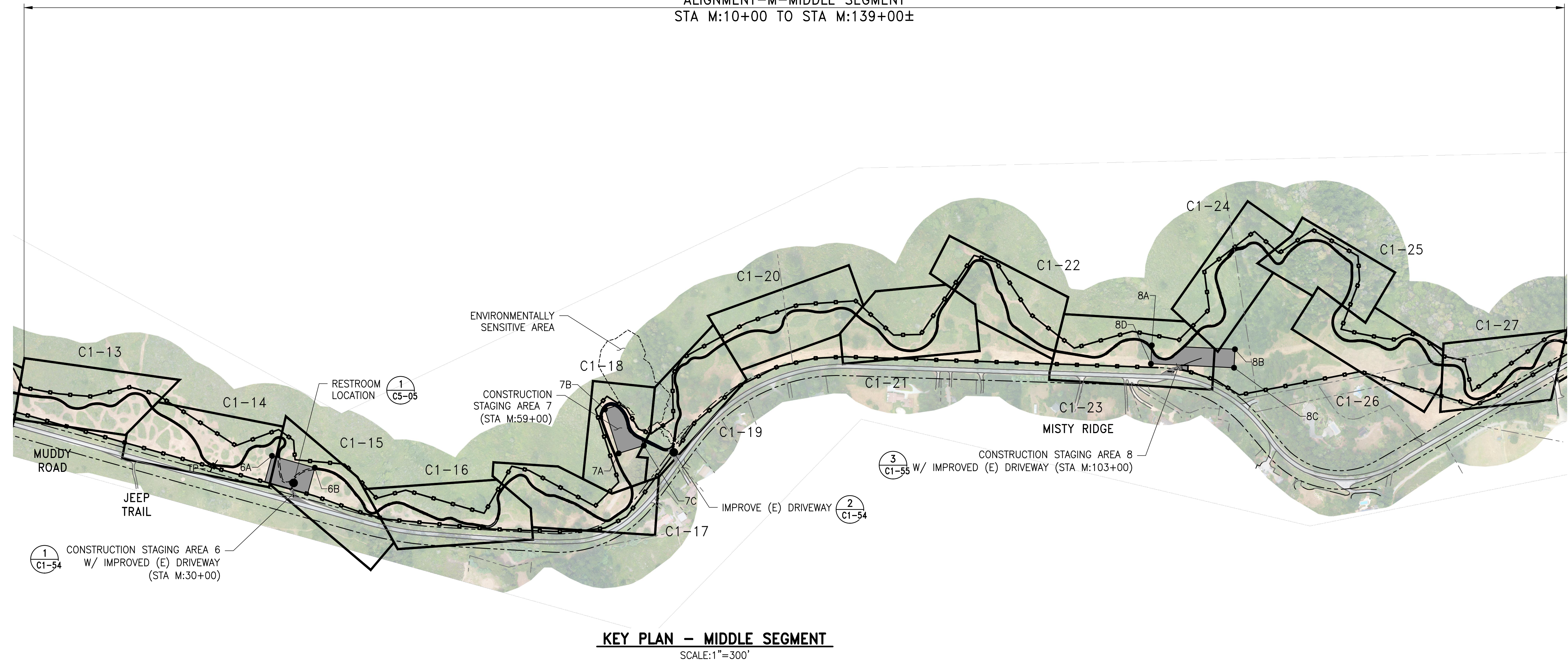
ELEVATION
DATUM
NAVD88



06/05/2023

NO.	DATE	DESCRIPTION	BY	APPRD

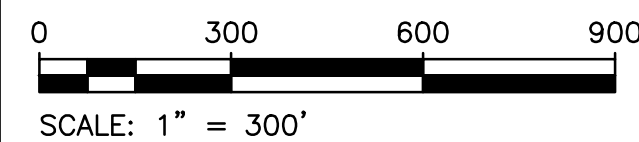
ALIGNMENT-M-MIDDLE SEGMENT
STA M:10+00 TO STA M:139+00±



NOTES:

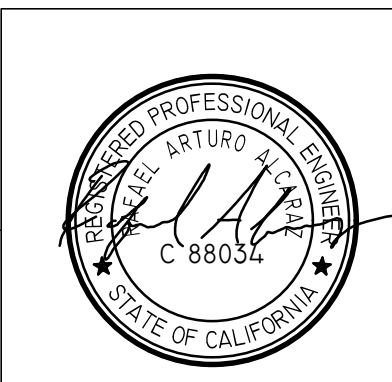
1. CONSTRUCTION STAGING AREAS TO BE CLEARED AND GRUBBED AS NEEDED. TREES TO BE PROTECTED IN PLACE WHERE FEASIBLE. AT PROJECT COMPLETION, CONSTRUCTION STAGING AREAS SHALL BE RESTORED AND SEEDED AS REQUIRED IN THE CONTRACT DOCUMENTS.

CONSTRUCTION STAGING AREA LAYOUT			
STATION	POINT	NORTHING	EASTING
M:30+00	6A	2000657.2196	6022851.3635
	6B	2000429.1811	6022926.1861
M:59+00	7A	1999105.4420	6023902.2129
	7B	1999299.0898	6024058.7895
	7C	1999015.5347	6024013.1197
M:103+00	8A	1997031.2151	6025988.0821
	8B	1996645.3985	6026219.6973
	8C	1996593.9285	6026133.9602
	8D	1996979.7450	6025902.3451



FOR THE SOLE USE OF THE DOCUMENT
RECIPIENT - DO NOT CITE, COPY, OR
CIRCULATE WITHOUT THE EXPRESSED
PERMISSION OF THE SFPUC.

ELEVATION
DATUM
NAVD88



06/05/2023

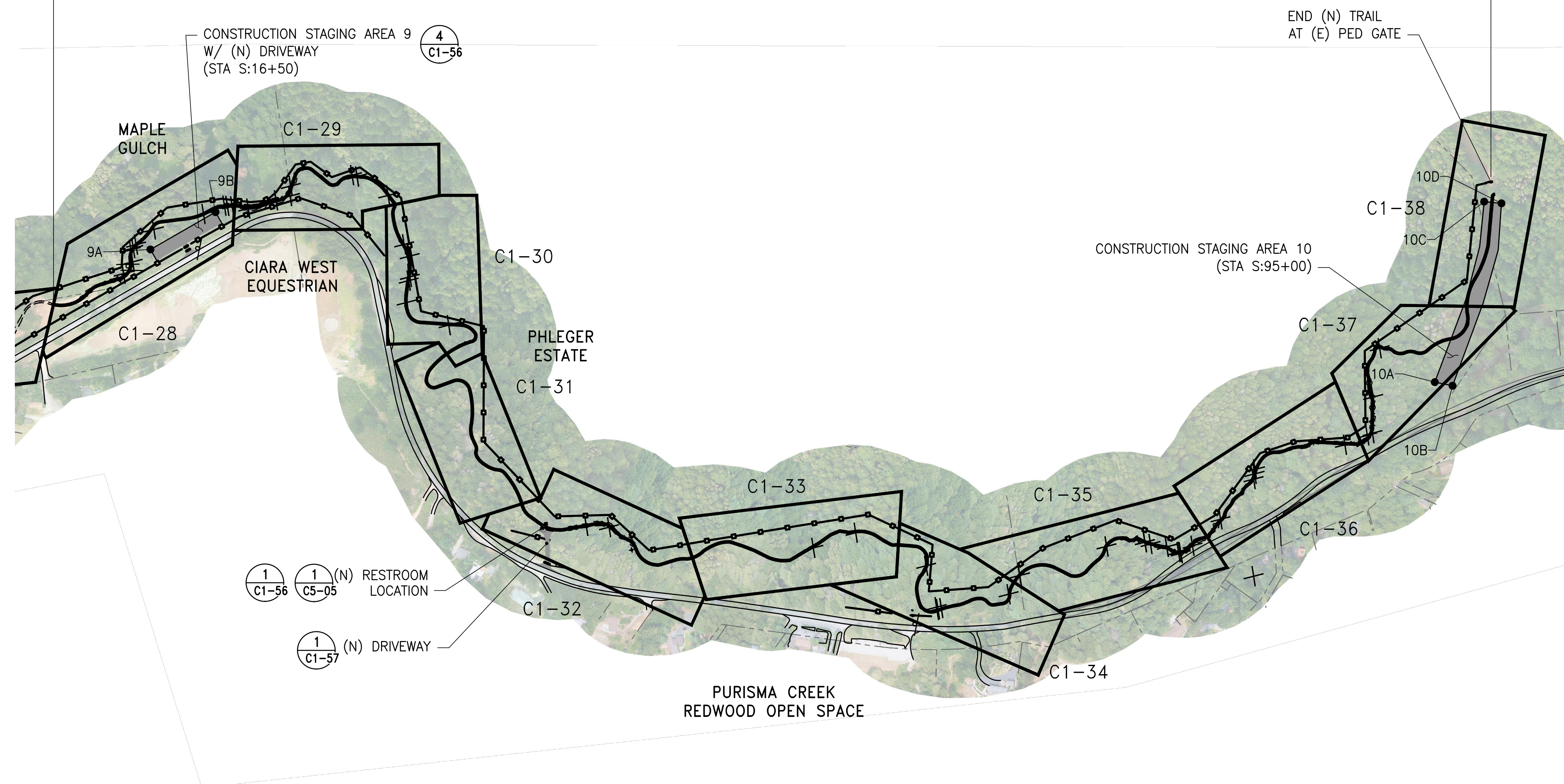
NO.	DATE	DESCRIPTION	BY	APPRD

CONTRACT NO. WD-2840
CITY AND COUNTY OF SAN FRANCISCO
PUBLIC UTILITIES COMMISSION
INFRASTRUCTURE DIVISION
ENGINEERING MANAGEMENT BUREAU
SOUTHERN SKYLINE BOULEVARD
RIDGE TRAIL EXTENSION

KEY PLAN - MIDDLE SEGMENT

CHECKED / APPROVED	AB / AB	DRAWN	DM
SECTION MANAGER	CH	DESIGNED	RA
SCALE	AS SHOWN	DATE	MAY 2023
APPROVED	<i>[Signature]</i>	APPROVED	<i>[Signature]</i>
MANAGER, ENGINEERING MANAGEMENT BUREAU		MANAGER, NATURAL RESOURCES & LAND MGMT. DIV.	
PLAN NO.	C1-00-M	DRAWING / FILE NO.	E-32894
		REVISION NO.	0

ALIGNMENT-S-SOUTH SEGMENT
STA S:10+00 TO STA S:100+76±



NOTES:

1. CONSTRUCTION STAGING AREAS TO BE CLEARED AND GRUBBED AS NEEDED. TREES TO BE PROTECTED IN PLACE WHERE FEASIBLE. AT PROJECT COMPLETION, CONSTRUCTION STAGING AREAS SHALL BE RESTORED AND SEEDED AS REQUIRED IN THE CONTRACT DOCUMENTS.

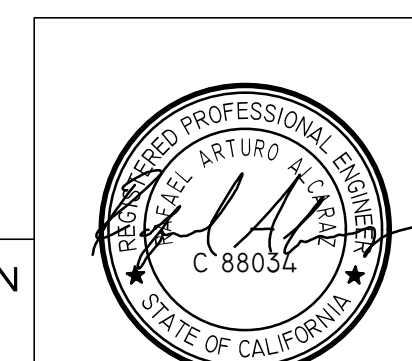
KEY PLAN – SOUTH SEGMENT

SCALE: 1"=300'

CONSTRUCTION STAGING AREA LAYOUT			
STA	POINT	NORTHING	EASTING
S:16+50	9A	1994983.6134	6027637.4223
	9B	1994849.9729	6027906.0116
S:95+00	10A	1990417.1560	6030045.0310
	10B	1990350.1922	6030072.5010
	10C	1990653.4965	6030755.1646
	10D	1990592.1330	6030787.9656

FOR THE SOLE USE OF THE DOCUMENT
RECIPIENT - DO NOT CITE, COPY, OR
CIRCULATE WITHOUT THE EXPRESSED
PERMISSION OF THE SFPUC.

ELEVATION
DATUM
NAVD88



06/05/2023

NO.	DATE	DESCRIPTION	BY	APPRD
REVISIONS				

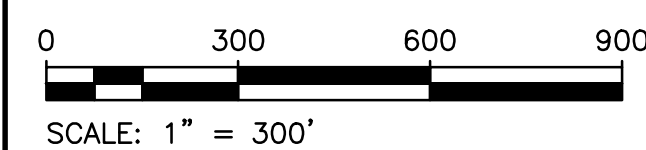
CONTRACT NO. WD-2840

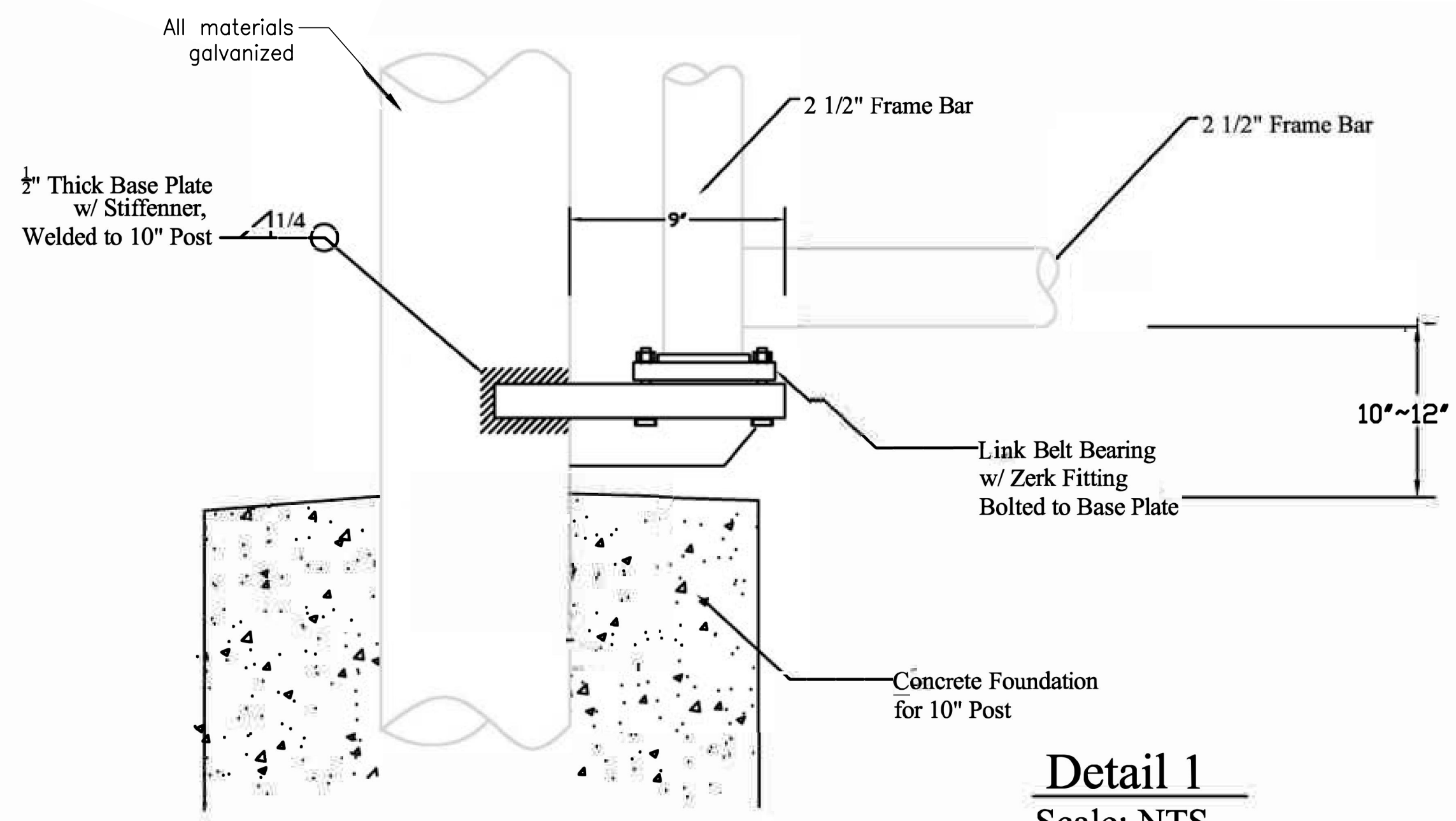
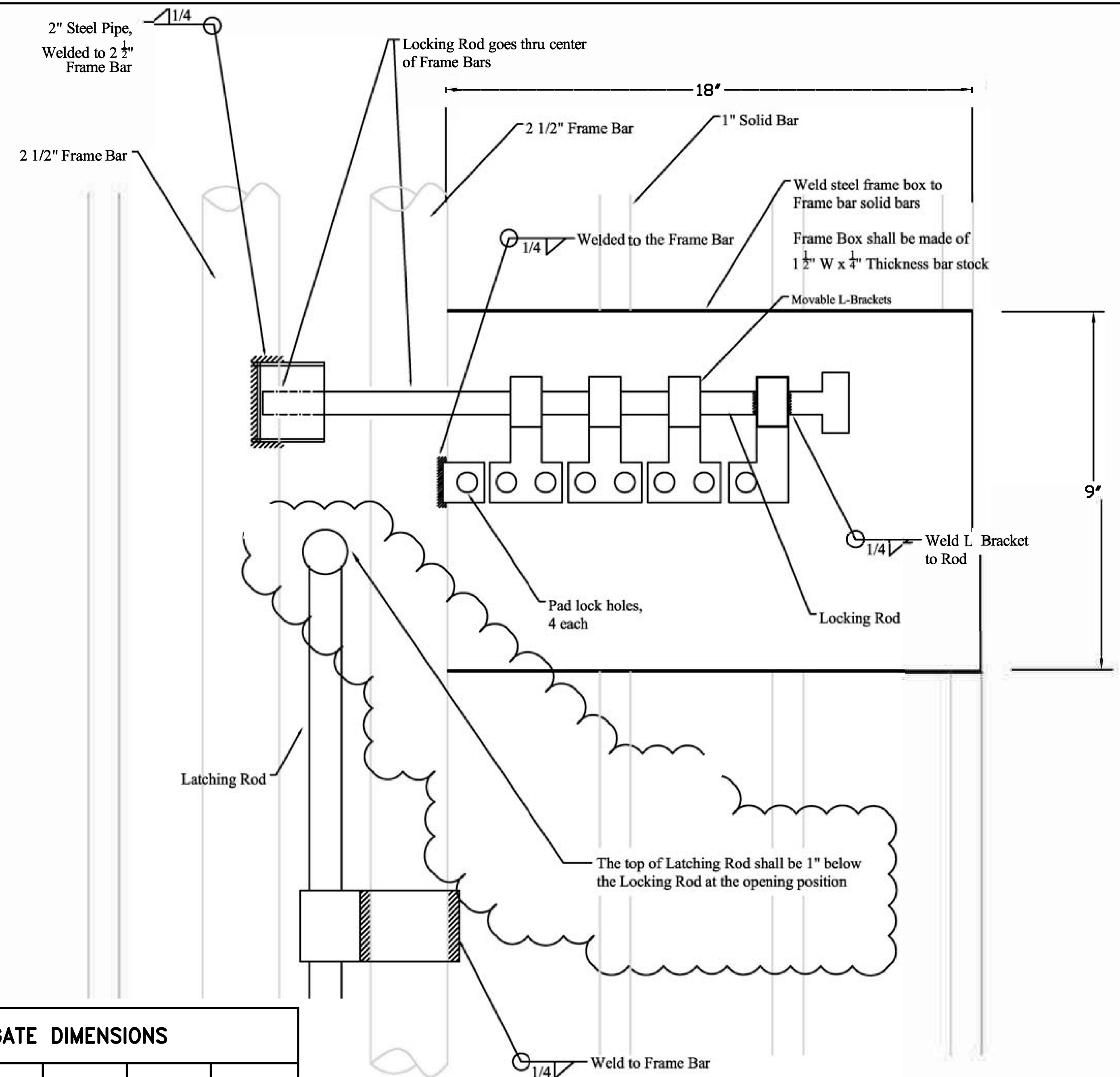
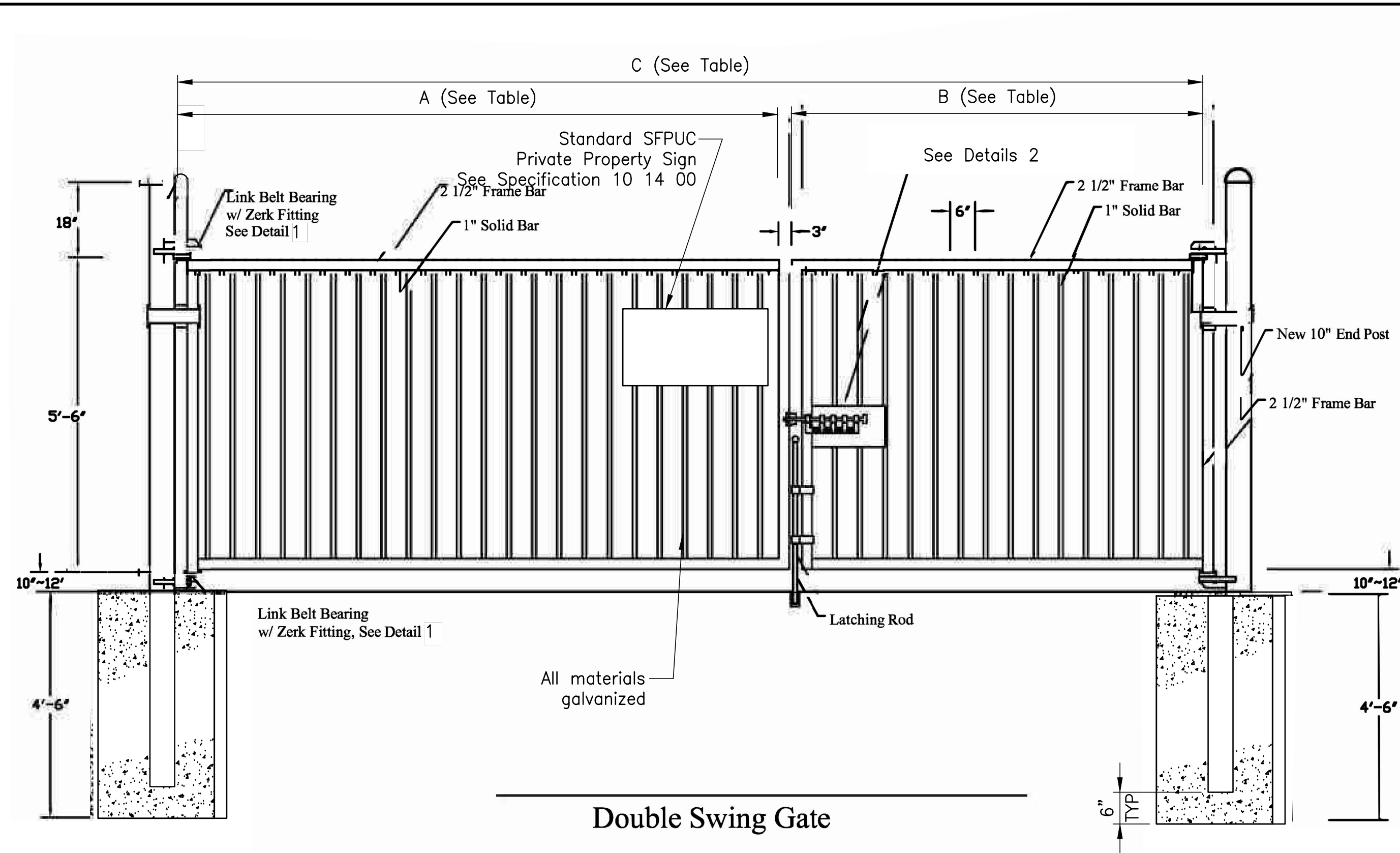
CITY AND COUNTY OF SAN FRANCISCO
PUBLIC UTILITIES COMMISSION
INFRASTRUCTURE DIVISION
ENGINEERING MANAGEMENT BUREAU

SOUTHERN SKYLINE BOULEVARD
RIDGE TRAIL EXTENSION

KEY PLAN – SOUTH SEGMENT

CHECKED / APPROVED	AB / AB	DRAWN	DM
SECTION MANAGER	CH	DESIGNED	RA
SCALE	AS SHOWN	DATE	MARCH 2023
APPROVED	<i>[Signature]</i>	APPROVED	<i>[Signature]</i>
MANAGER, ENGINEERING MANAGEMENT BUREAU		MANAGER, NATURAL RESOURCES & LAND MGMT. DIV.	
PLAN NO.	C1-00-S	DRAWING / FILE NO.	E-32895
		REVISION NO.	0





GATE DIMENSIONS				
LOCATION	PLAN NO.	A	B	C
SR35 PARKING LOT	C1-50	12'	8'	20'-3"
N:28+00 DRIVEWAY	C1-51	12'	4'	16'-3"
N:68+00 DRIVEWAY	C1-53	12'	4'	16'-3"
M:30+00 DRIVEWAY	C1-54	12'	2'	14'-3"
M:63+50 DRIVEWAY	C1-54	12'	8'	20'-3"
M:103+00 DRIVEWAY	C1-55	12'	2'	14'-3"
S:16+50 DRIVEWAY	C1-55	12'	2'	14'-3"
S:46+50 DRIVEWAY	C1-56	12'	2'	14'-3"
S:100+70 DRIVEWAY	C1-38	12'	8'	20'-3"
FIFIELD-CAHILL STAGING (QTY3)	C2-10	12'	8'	20'-3"

Detail 2
Scale: NTS

ACCESS GATE NOTES:

1. The locking mechanism shall be installed inside the gate.
2. The gate shall have at least 4 tabs on the slide bar. The overall dimension of the lock/tab enclosure is to be 8 inches by 6 inches high at a minimum. The distance around the slide bar needs to be ample enough to allow locks with longer shanks to be installed and hang freely so there should be 4 inches free space from the tabs to the bottom of the slide bar enclosure.
3. Hinges shall include bearings on the pivot point with zerk fittings for lubrication.
4. Overall height of gate is 5'-6" from bottom rail to top rail.
5. The outside frame post shall extend at least 18" above the top to allow for the attachment of barbed wire.
6. The gate has 1 inch solid vertical bars and 2 1/2 inch frame bars and 10 inch end posts.
7. Refer to specifications 03 30 00 and 05 12 00 for concrete and steel requirements.
8. Coat any field welds with 2 coats of Cold Galvanized Spray.

FOR THE SOLE USE OF THE DOCUMENT RECIPIENT - DO NOT CITE, COPY, OR CIRCULATE WITHOUT THE EXPRESSED PERMISSION OF THE SFPUC.

ELEVATION DATUM
NAVD88



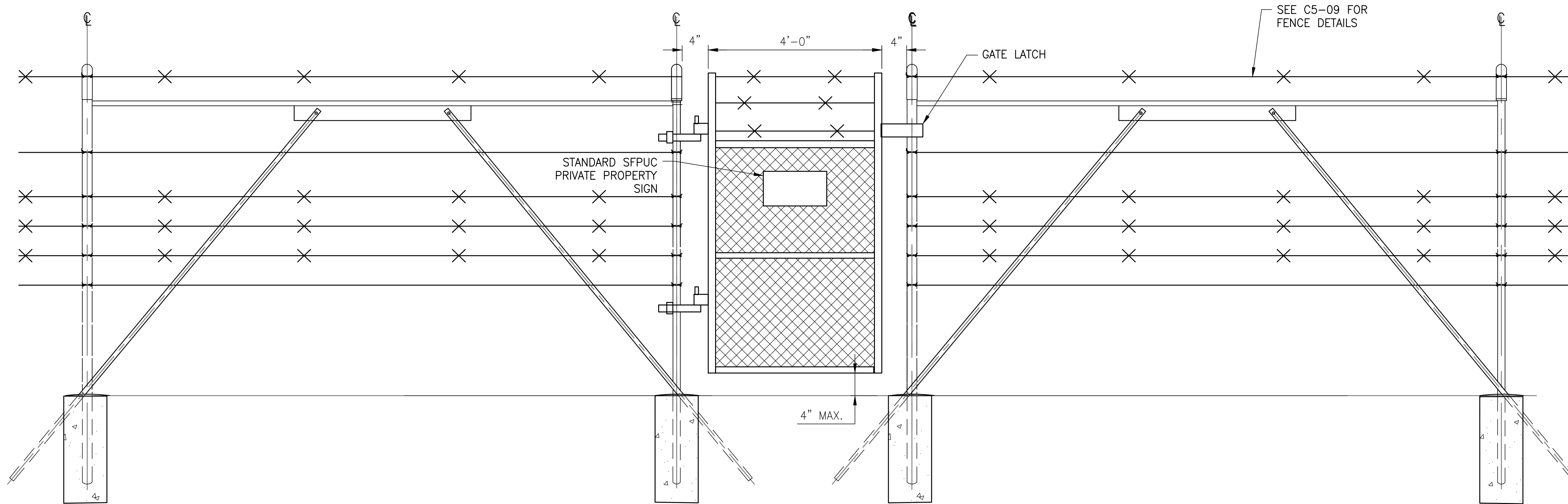
NO.	DATE	DESCRIPTION	BY	APPROD

CONTRACT NO. WD-2840

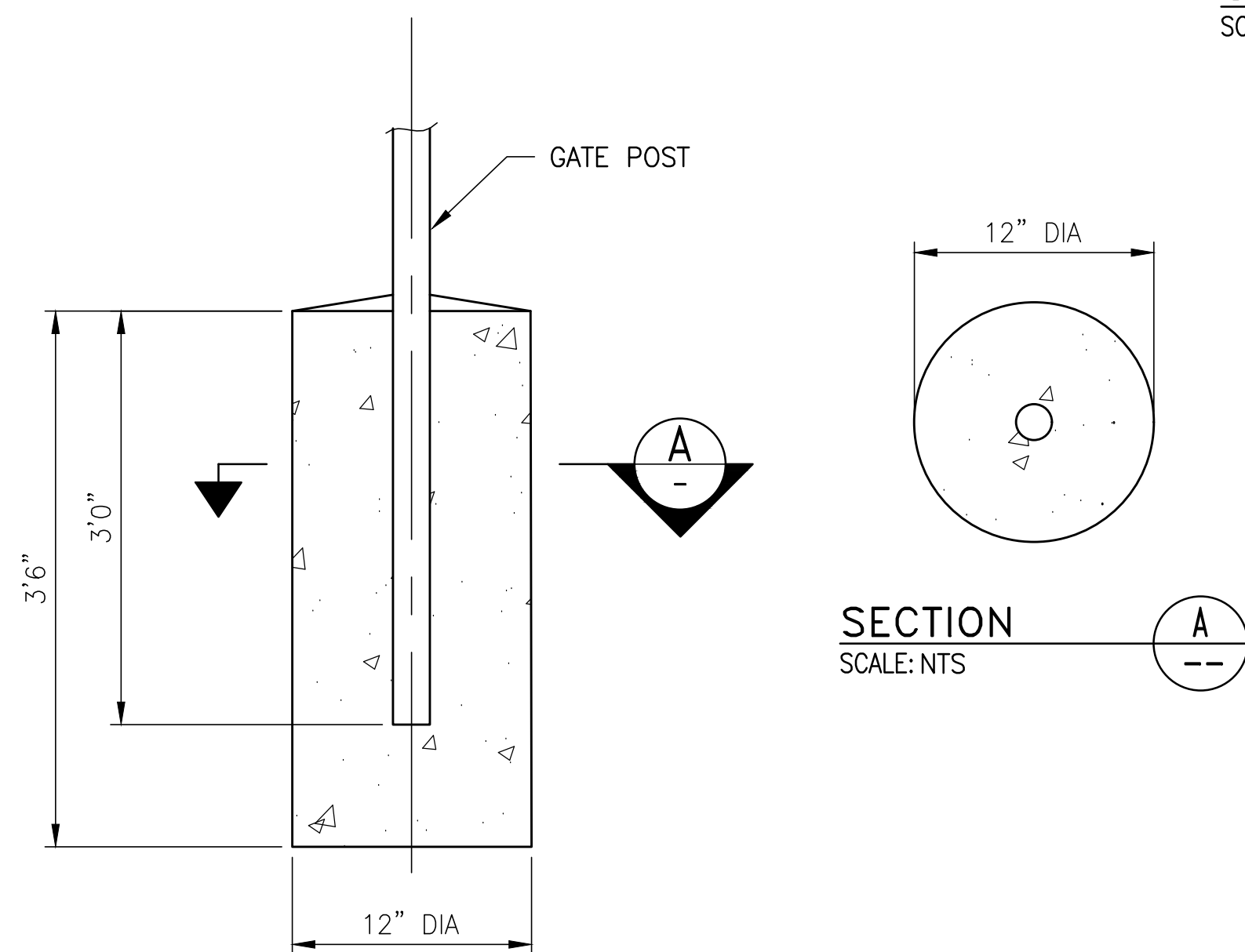
CITY AND COUNTY OF SAN FRANCISCO
PUBLIC UTILITIES COMMISSION
INFRASTRUCTURE DIVISION
ENGINEERING MANAGEMENT BUREAU
SOUTHERN SKYLINE BOULEVARD
RIDGE TRAIL EXTENSION

ACCESS GATE DETAILS

CHECKED / APPROVED	AB / AB	DRAWN	DM
SECTION MANAGER	CH	DESIGNED	RA
SCALE	AS SHOWN	DATE	MAY 2023
APPROVED	<i>J. Alvarez</i>	APPROVED	<i>J. Alvarez</i>
MANAGER, ENGINEERING MANAGEMENT BUREAU		MANAGER, NATURAL RESOURCES & LAND MGMT. DIV.	
PLAN NO.	C5-07	DRAWING / FILE NO.	E-32960
		REVISIONS	0



CHAIN LINK FENCE DETAIL ①
SCALE: NTS



PEDESTRIAN GATE /CORNER POST/WILDLIFE OFFSET FOOTING ②
SCALE: NTS

NOTES:

1. WIRE LAYOUT FOR PEDESTRIAN FENCE SHALL MATCH ADJACENT FENCE TYPE.
2. BRACING SHALL ALWAYS HAVE BARBED/SMOOTH WIRE ABOVE IT.
3. CHAIN LINK PEDESTRIAN GATE FOR MAINTAINANCE USE ONLY. GATE IS LOCATED EVERY HALF MILE FOR BOTH INTERIOR AND EXTERIOR SIDES OF THE TRAIL.

CONTRACT NO. WD-2840

CITY AND COUNTY OF SAN FRANCISCO
PUBLIC UTILITIES COMMISSION
INFRASTRUCTURE DIVISION
ENGINEERING MANAGEMENT BUREAU

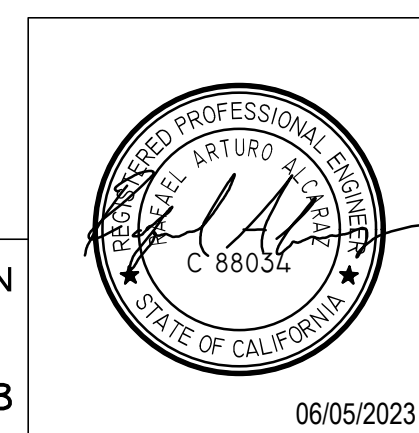
SOUTHERN SKYLINE BOULEVARD
RIDGE TRAIL EXTENSION

PEDESTRIAN GATE AND FOOTING DETAILS

CHECKED / APPROVED	AB / AB	DRAWN	DM
SECTION MANAGER	CH	DESIGNED	RA
SCALE	AS SHOWN	DATE	MARCH 2023
APPROVED	<i>[Signature]</i>	APPROVED	<i>[Signature]</i>
MANAGER, ENGINEERING MANAGEMENT BUREAU		MANAGER, NATURAL RESOURCES & LAND MGMT. DIV.	
PLAN NO.	C5-08	DRAWING / FILE NO.	E-32961
		REVISION NO.	0

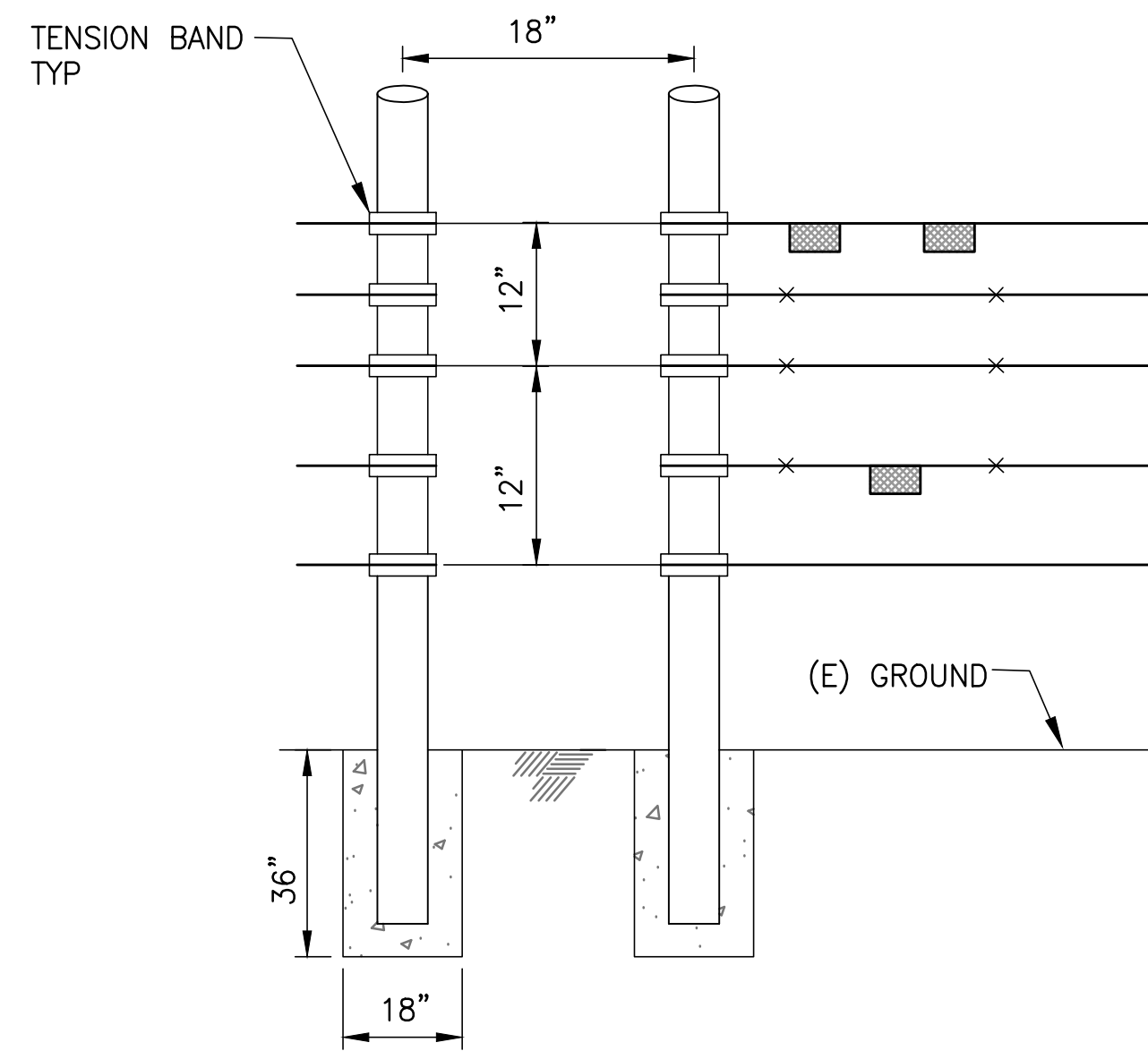
**FOR THE SOLE USE OF THE DOCUMENT
RECIPIENT - DO NOT CITE, COPY, OR
CIRCULATE WITHOUT THE EXPRESSED
PERMISSION OF THE SFPUC.**

ELEVATION
DATUM
NAVD88



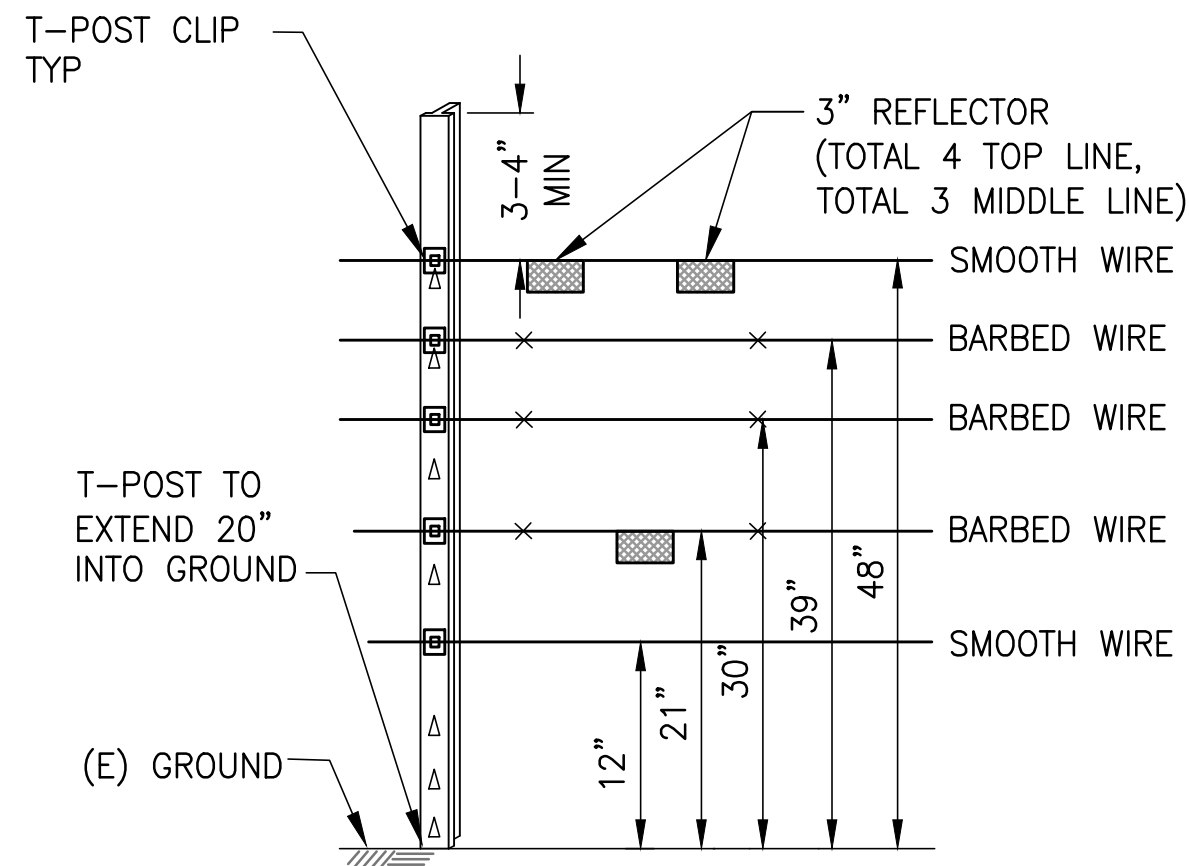
06/05/2023

NO.	DATE	DESCRIPTION	BY	APPRD



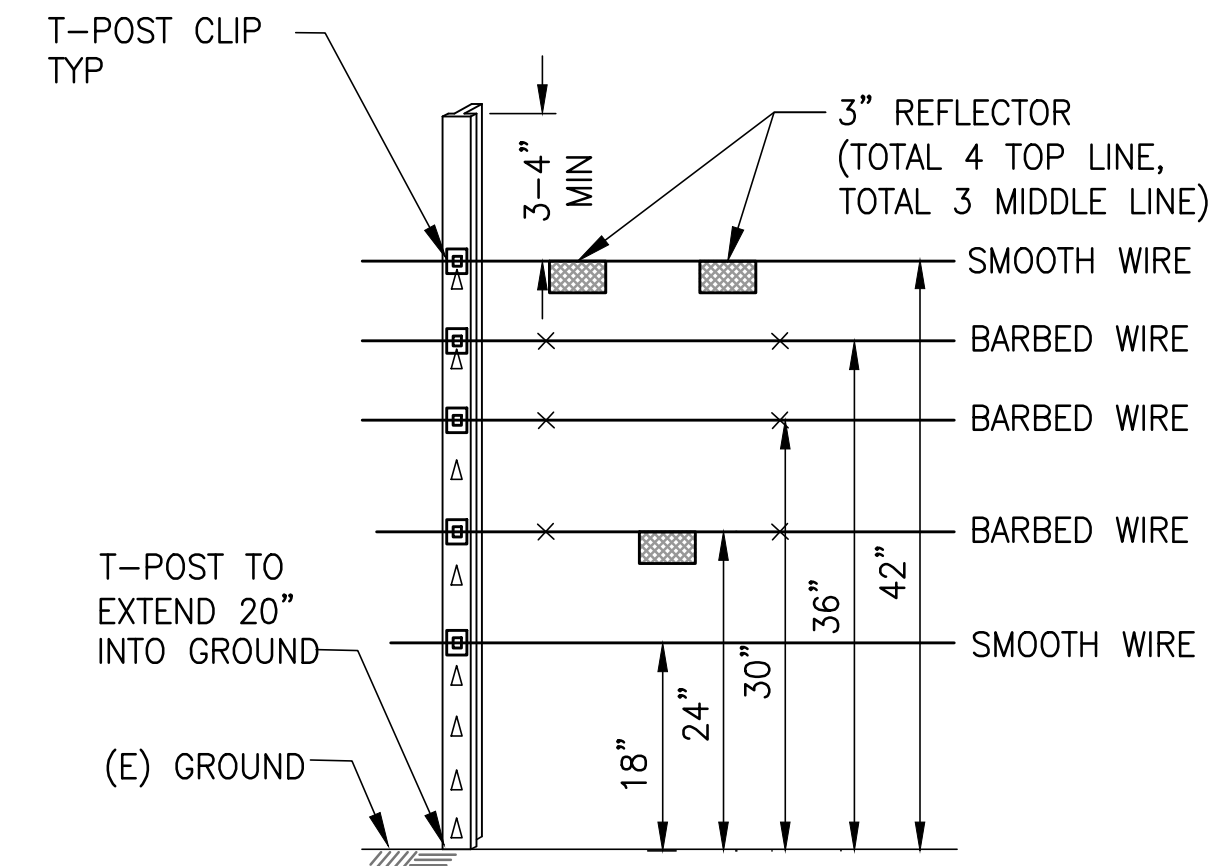
NOTE:
1. OFFSET PERPENDICULAR TO ADJACENT FENCES.

WILDLIFE OFFSET DETAIL (1)
SCALE: NTS



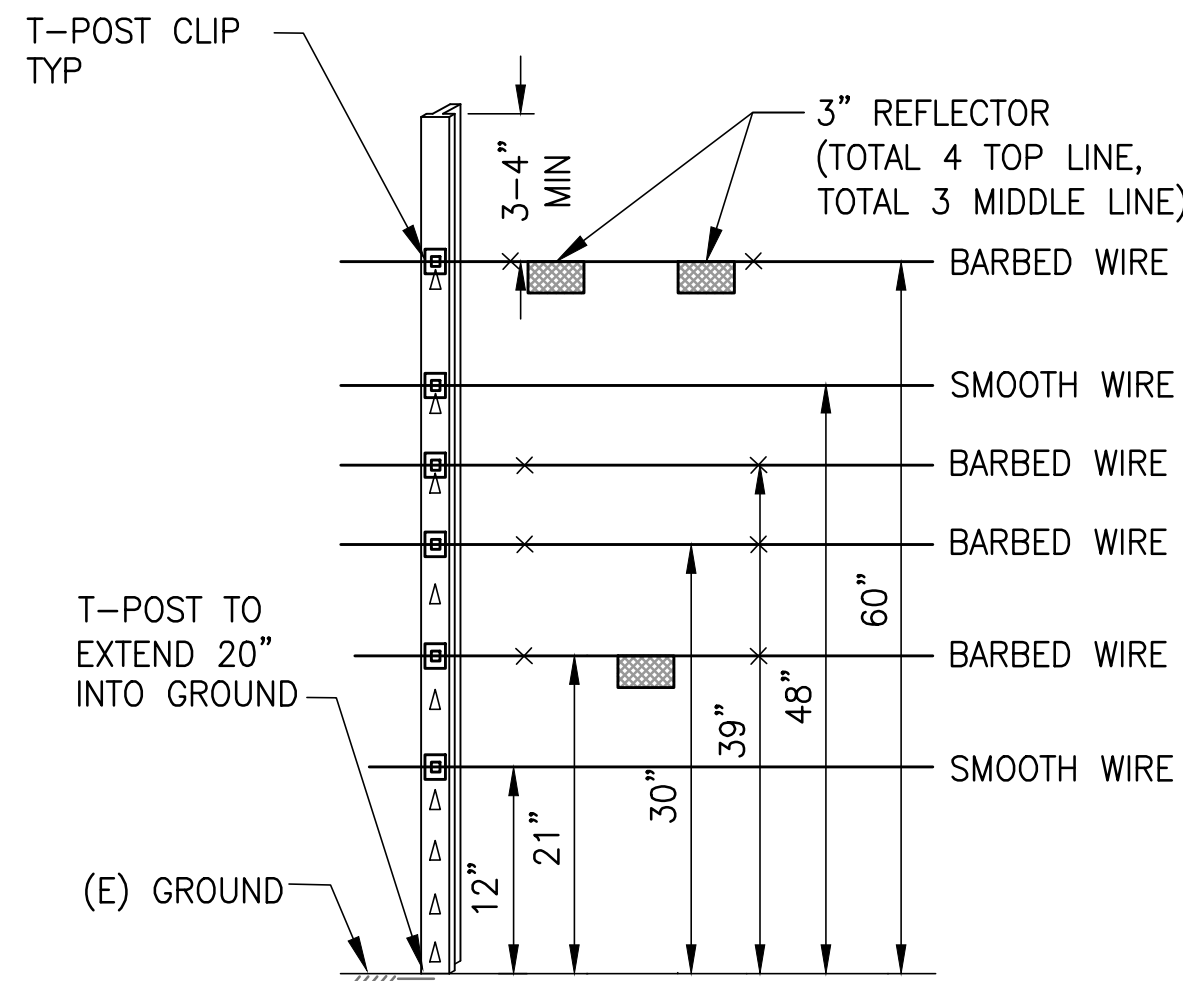
NOTES:
1. DETAIL TO BE USED EVERY 10'.

TYPICAL 48-INCH 5-STRAND WILDLIFE FRIENDLY EXTERIOR FENCE (TYPE 4) DETAIL (3)
SCALE: NTS



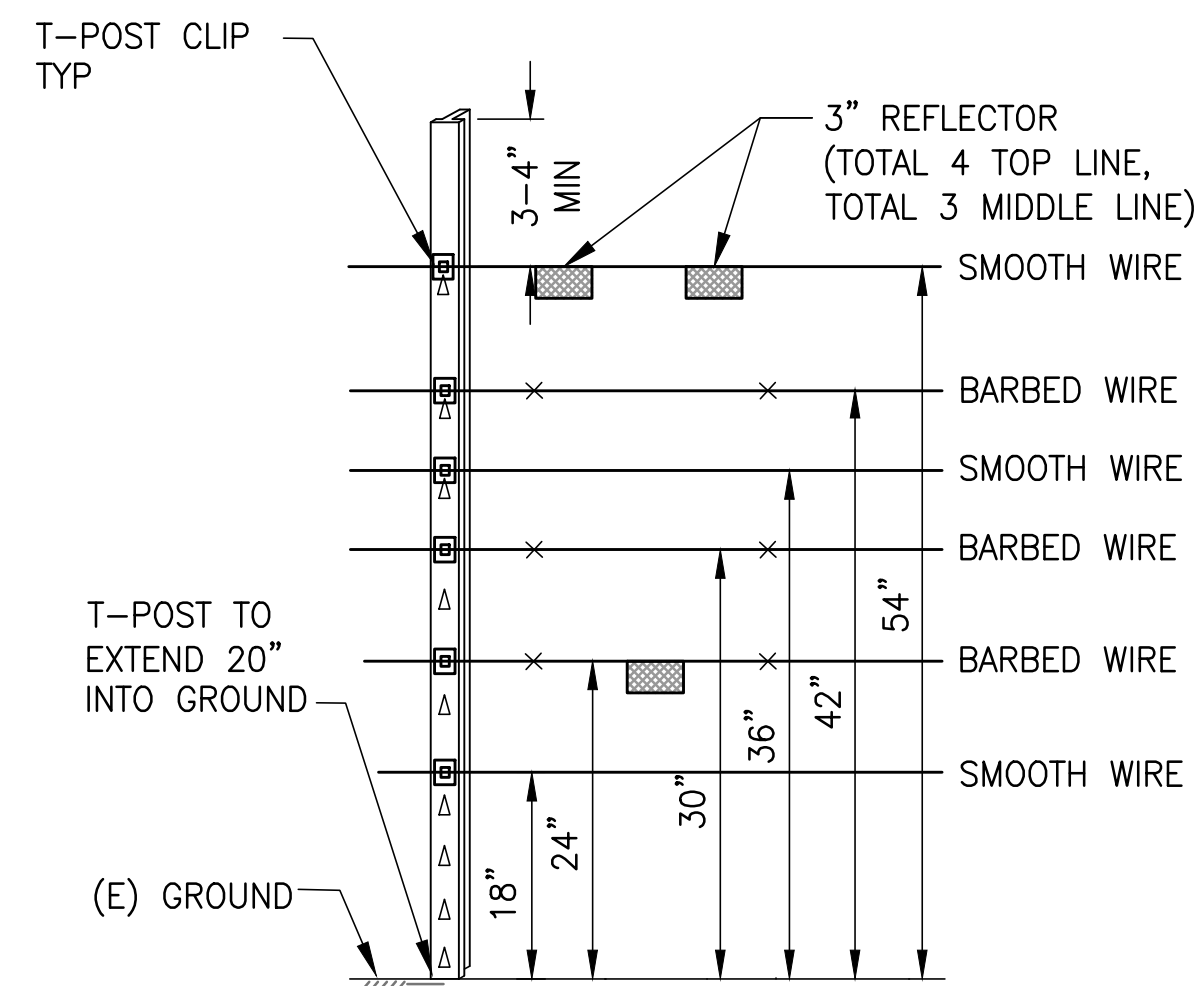
NOTES:
1. DETAIL TO BE USED EVERY 10'.

TYPICAL 42-INCH 5-STRAND WILDLIFE FRIENDLY INTERIOR FENCE (TYPE 5) DETAIL (4)
SCALE: NTS



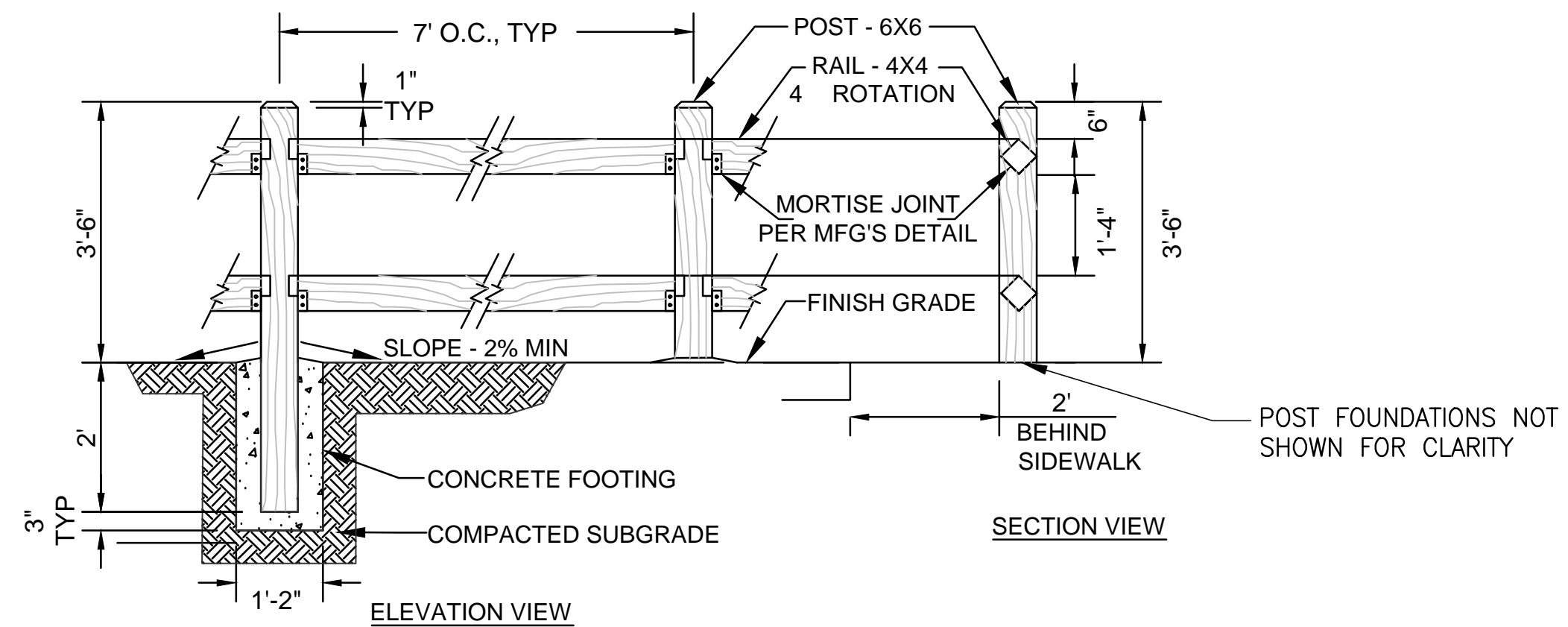
NOTES:
1. DETAIL TO BE USED EVERY 10'.

TYPICAL 60-INCH 6-STRAND HYBRID WILDLIFE FRIENDLY EXTERIOR FENCE (TYPE 6) DETAIL (5)
SCALE: NTS



NOTES:
1. DETAIL TO BE USED EVERY 10'.

TYPICAL 54-INCH 6-STRAND HYBRID WILDLIFE FRIENDLY INTERIOR FENCE (TYPE 7) DETAIL (6)
SCALE: NTS

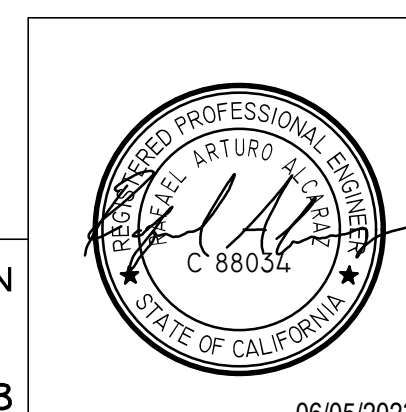


NOTE:
1. FENCE SHALL BE:
CONCRETE RANCH RAIL, AS PROVIDED BY TIMBERCRETE OR APPROVED EQUAL. COLOR: TBD,
OR SUPERIOR RAIL BY SUPERIOR PRODUCTS: COLOR: TBD.

CONCRETE SPLIT RAIL FENCE (7)
SCALE: N.T.S.

FOR THE SOLE USE OF THE DOCUMENT RECIPIENT - DO NOT CITE, COPY, OR CIRCULATE WITHOUT THE EXPRESSED PERMISSION OF THE SFPUC.

ELEVATION DATUM
NAVD88



06/05/2023

NO.	DATE	DESCRIPTION	BY	APPRD
REVISIONS				

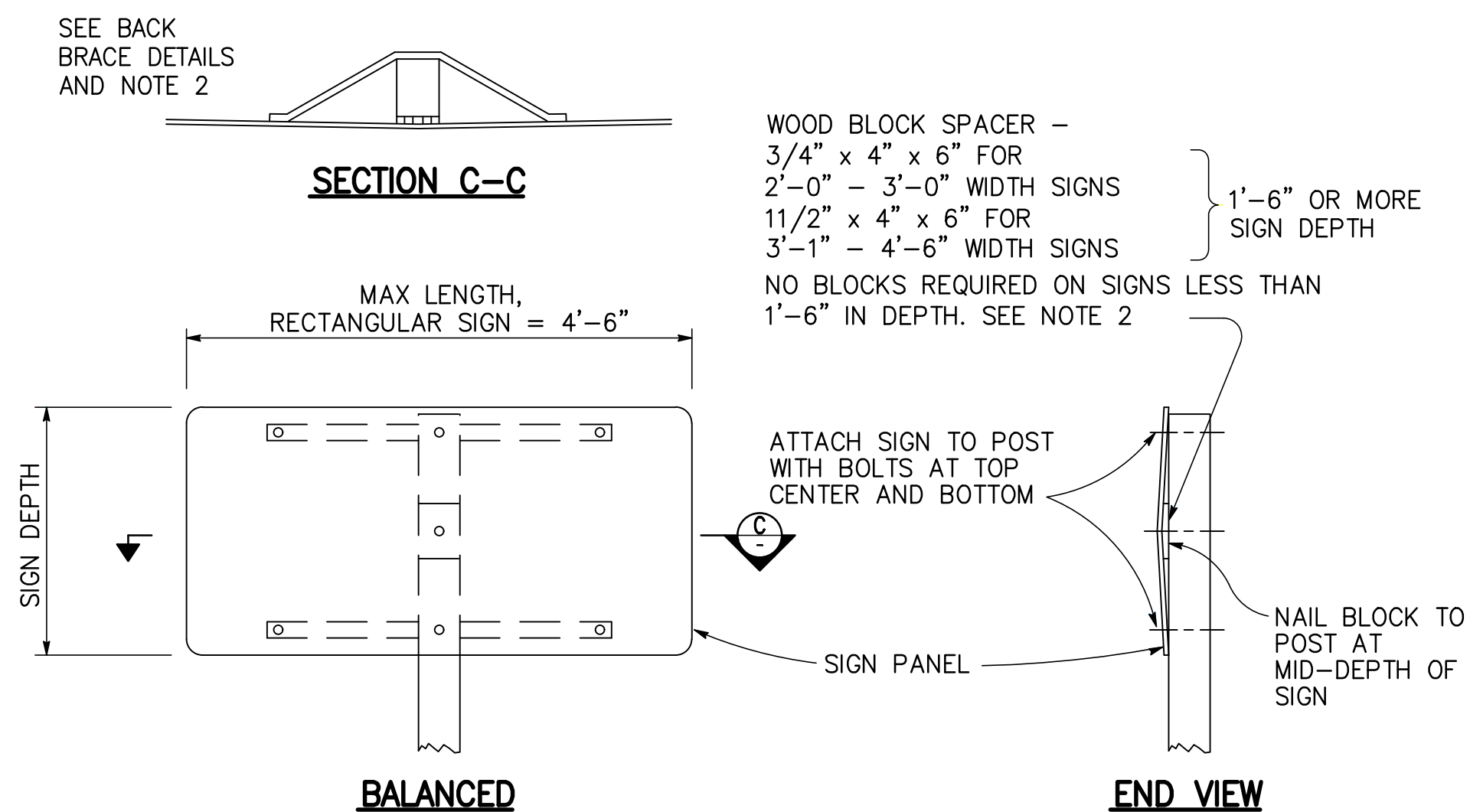
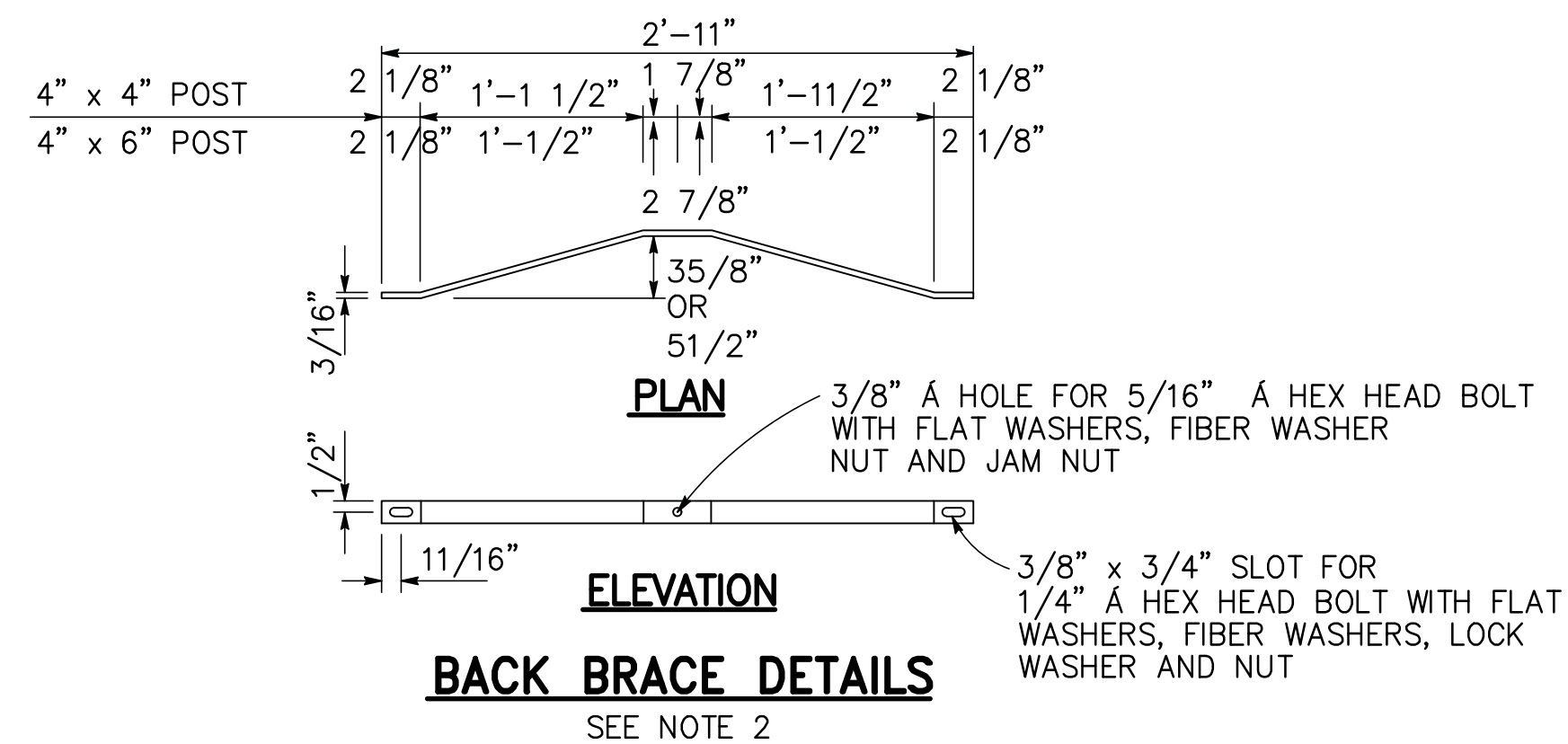
CONTRACT NO. WD-2840

CITY AND COUNTY OF SAN FRANCISCO
PUBLIC UTILITIES COMMISSION
INFRASTRUCTURE DIVISION
ENGINEERING MANAGEMENT BUREAU

SOUTHERN SKYLINE BOULEVARD
RIDGE TRAIL EXTENSION

TYPICAL FENCE DETAILS 1

CHECKED / APPROVED	AB / AB	DRAWN	DM
SECTION MANAGER	CH	DESIGNED	RA
SCALE	AS SHOWN	DATE	MARCH 2023
APPROVED	<i>J. Alvarez</i>	APPROVED	<i>J. Alvarez</i>
MANAGER, ENGINEERING MANAGEMENT BUREAU		MANAGER, NATURAL RESOURCES & LAND MGMT. DIV.	
PLAN NO.	C5-09	DRAWING / FILE NO.	E-32962
		REVISION NO.	0



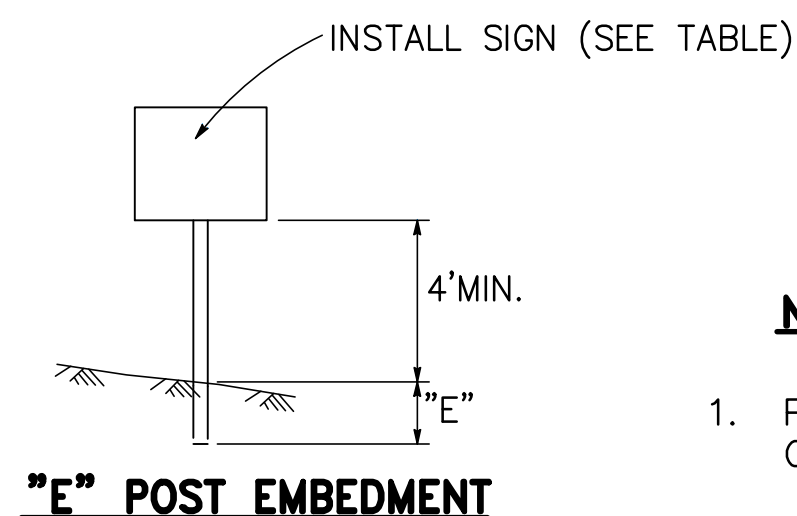
SINGLE POST INSTALLATION

SEE NOTE 5 REGARDING BREAKAWAY FEATURE FOR SINGLE POST INSTALLATIONS.

SIGN POST DETAIL

SCALE: N.T.S.

REFERENCE: CALTRANS STANDARD PLAN R52



POST SIZE	"E"
4" x 4"	3.5'
4" x 6"	4.5'
6" x 6"	5.0'
6" x 8"	6.0'

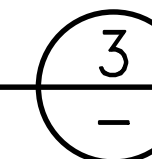
NOTES:

1. PLACE LONG DIMENSION OF POST CROSS SECTION NORMAL TO SIGN AXIS. SEE SECTION C-C.
2. BALANCED SINGLE POST INSTALLATIONS OF UNFRAMED SINGLE SHEET ALUMINUM PANEL SIGNS SHALL HAVE BLOCK SPACERS IF 1'-6" OR MORE IN DEPTH AND A COMBINATION OF BLOCK SPACERS AND BACK BRACES IF 1'-6" OR MORE IN DEPTH AND 2'-10" OR MORE IN WIDTH. SIGN PANELS LESS THAN 1'-6" IN DEPTH AND 2'-10" OR MORE IN WIDTH SHALL HAVE BACK BRACES ONLY.
3. FOR POST SIZE SEE SIGN LAYOUT, FORMAT OR QUANTITY SHEETS.
4. BALANCED SINGLE POST INSTALLATIONS OF LAMINATED PANEL AND FRAMED SINGLE SHEET PANEL SIGNS REQUIRE BACK BRACES WHEN 2'-10" OR MORE IN LENGTH.
5. BREAKAWAY FEATURE FOR SINGLE POST INSTALLATION SHALL BE THE SAME AS THE BREAKAWAY FEATURE SHOWN FOR THE TWO POST INSTALLATION.
6. TOLERANCE FOR DIAMETER OF DRILLED HOLES IN BREAKAWAY FEATURE IS $\pm 1/8"$.
7. BOLT HOLE LAYOUT IS DEPENDENT ON TYPE OF PANEL. DRILL HOLES IN POST TO MATCH PANEL.
8. 3/8" FOR LAMINATED PANEL SIGNS OR FRAMED SINGLE SHEET ALUMINUM PANEL SIGNS.
9. 5/16" FOR SINGLE SHEET ALUMINUM PANEL SIGNS.
10. SIGN POST WOOD TO BE PRESSURE TREATED AND HARDWARE TO BE HOT DIPPED GALVANIZED.



EQUESTRIAN PARKING SIGN

SCALE: N.T.S.



SIGNAGE TABLE			
PLAN	LOCATION	SIGN TYPE	QUANTITY
C1-01/C1-50	SR35 DRIVEWAY	MUTCD R26 (CA)	1
C1-10	N:93+50±	MUTCD R26 (CA)	1
C1-15/C1-54	M:30+00± DRIVEWAY	MUTCD R26 (CA)	1
C1-28/C5-04	S:13+50±	"CROSSING AHEAD - WATCH YOUR STEP" (TYPE 2)	2
C1-28/C1-55	S:16+00 DRIVEWAY	MUTCD R26 (CA)	1
C1-50	SR35 PARKING LOT	MUTCD R99 (CA) - 2	2
C1-50	SR35 PARKING LOT	EQUESTRIAN PARKING (DETAIL 3) - 4	4
C1-51	M:28+00 DRIVEWAY	MUTCD R26 (CA)	1
C1-54	M:63+50 DRIVEWAY	MUTCD R26 (CA)	1
C1-25/C1-55	M:103+00 DRIVEWAY	MUTCD R26 (CA)	1
C1-56	M:46+50 DRIVEWAY	MUTCD R26 (CA)	1
C1-57	M:65+50 DRIVEWAY	MUTCD R26 (CA)	1
C2-10	FIFIELD CAHILL STAGING PARKING LOT	MUTCD R99 (CA) - 5	5
C2-10	FIFIELD CAHILL STAGING PARKING LOT	EQUESTRIAN PARKING (DETAIL 3) - 3	3
C2-11	CEMETERY GATE IMPROVEMENTS	MUTCD R99 (CA) - 5	5
C2-11	CEMETERY GATE IMPROVEMENTS	"BUS PARKING ONLY" - 2	2
SPEC SECTION 10 14 00	CEMETERY GATE IMPROVEMENTS	INTERPRETATIVE SIGNS	34

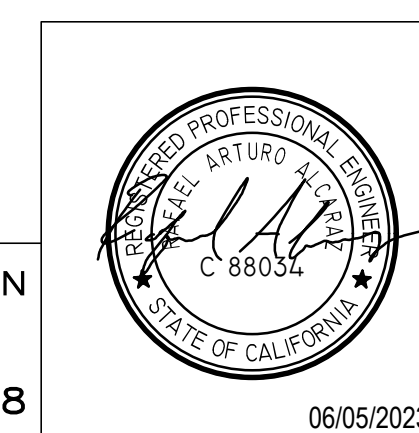
CONTRACT NO. WD-2840

CITY AND COUNTY OF SAN FRANCISCO
PUBLIC UTILITIES COMMISSION
 INFRASTRUCTURE DIVISION
 ENGINEERING MANAGEMENT BUREAU

SOUTHERN SKYLINE BOULEVARD
 RIDGE TRAIL EXTENSION

SIGNAGE DETAILS

CHECKED / APPROVED	AB / AB	DRAWN	DM
SECTION MANAGER	CH	DESIGNED	RA
SCALE	AS SHOWN	DATE	MARCH 2023
APPROVED	<i>[Signature]</i>	APPROVED	<i>[Signature]</i>
MANAGER, ENGINEERING MANAGEMENT BUREAU		MANAGER, NATURAL RESOURCES & LAND MGMT. DIV.	
PLAN NO.	C5-11	DRAWING / FILE NO.	E-32964
		REVISION NO.	0



FOR THE SOLE USE OF THE DOCUMENT RECIPIENT - DO NOT CITE, COPY, OR CIRCULATE WITHOUT THE EXPRESSED PERMISSION OF THE SFPUC.

ELEVATION DATUM
 NAVD88

NO.	DATE	DESCRIPTION	BY	APPRD
REVISIONS				