



San Francisco
Water Power Sewer

Services of the San Francisco Public Utilities Commission

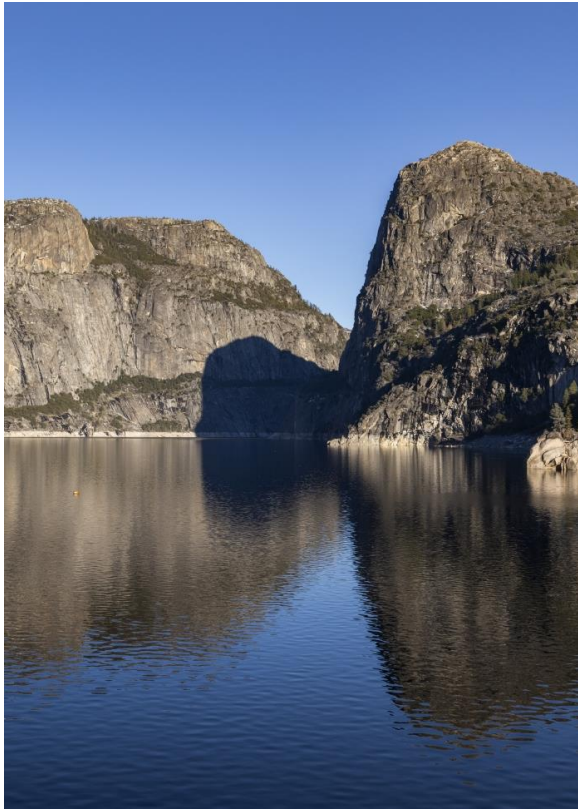


Local Water Conveyance/Distribution System Program WD-2780, Water Main Replacement on 21st, Hill, and Various Streets

Presentation to: 21st Street Collingwood to Castro Neighbors

12.12.2023

San Francisco Public Utilities Commission



Water



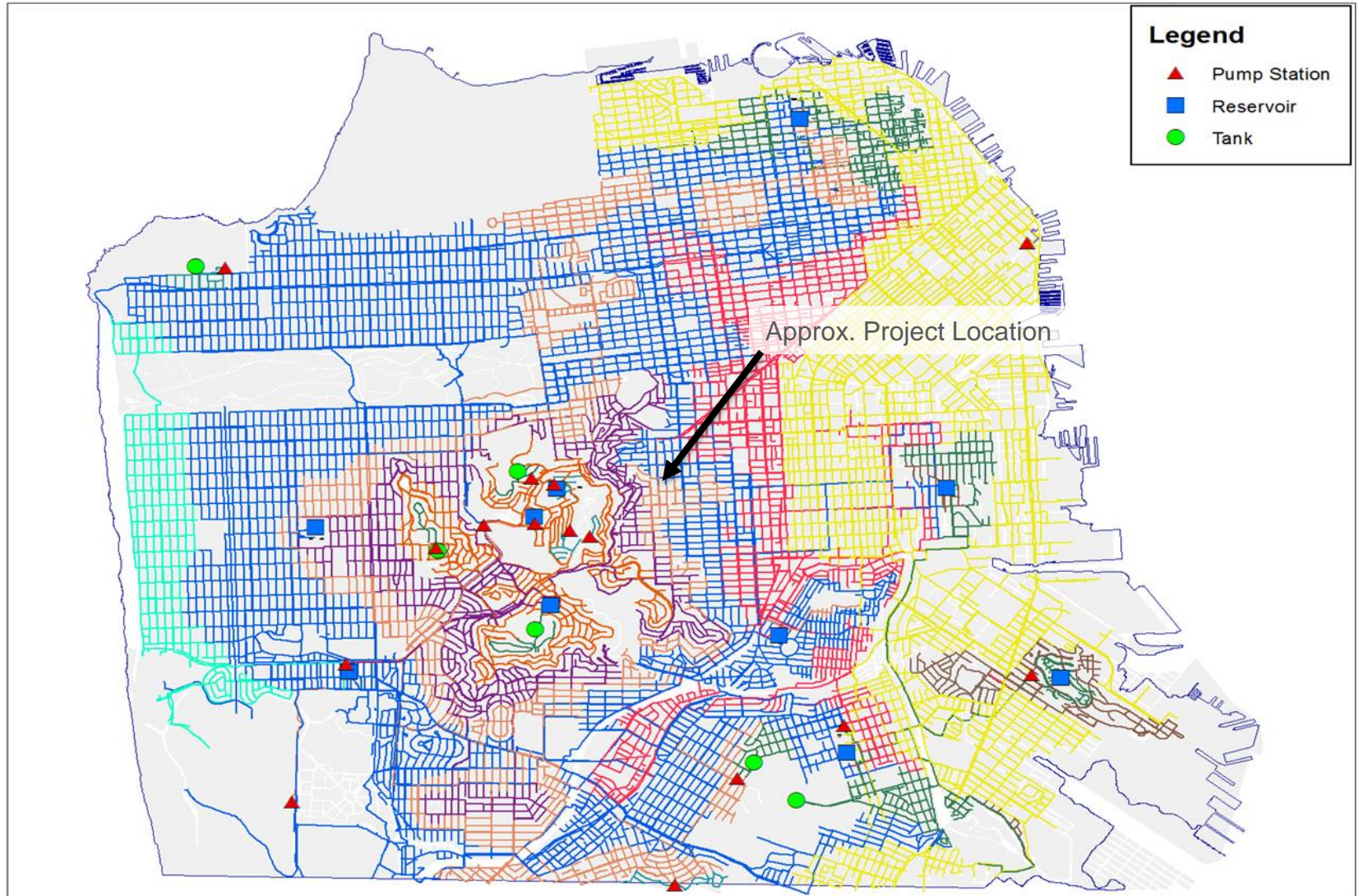
Power



Sewer

1. **Overview:** Local Water Conveyance / Distribution System Program
2. Project Purpose/Objective & Scope
3. Impacts to Your Water Service
4. Access During Construction
5. Items for Input & Targeted Questions

Overview



Overview

- 1,240 miles of distribution mains
 - 220 miles > 100 years old
 - 320 miles of priority pipelines in need of replacement
- Goal:
 - Replace 15 miles per year



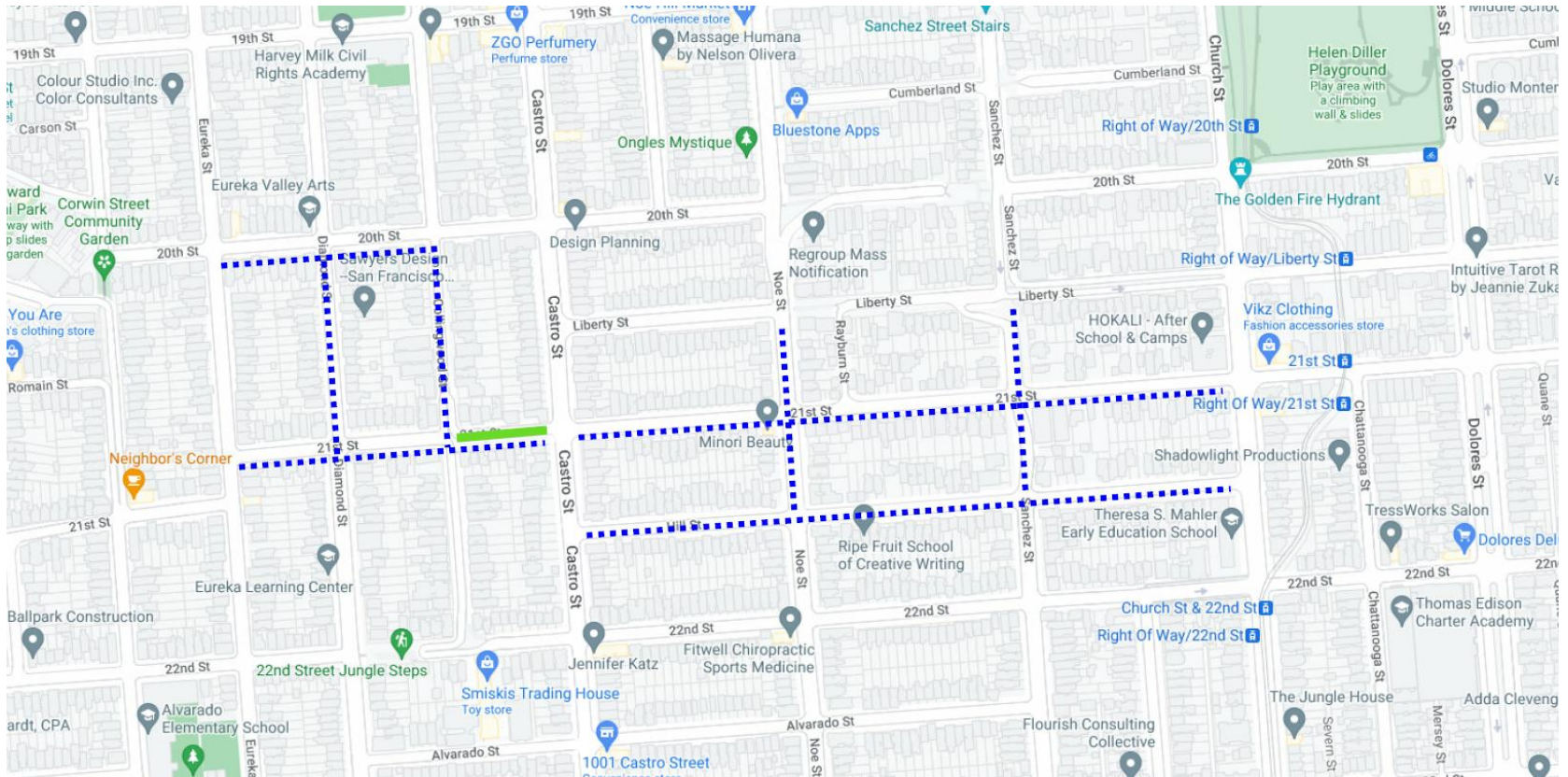
Project Purpose & Objective

- Purpose
 - Replace existing water mains that have exceeded their useful life
- Objective
 - Maintain critical utility services
 - Avoid disruptive emergency repairs
 - Upsize pipelines to improve water flows for firefighting

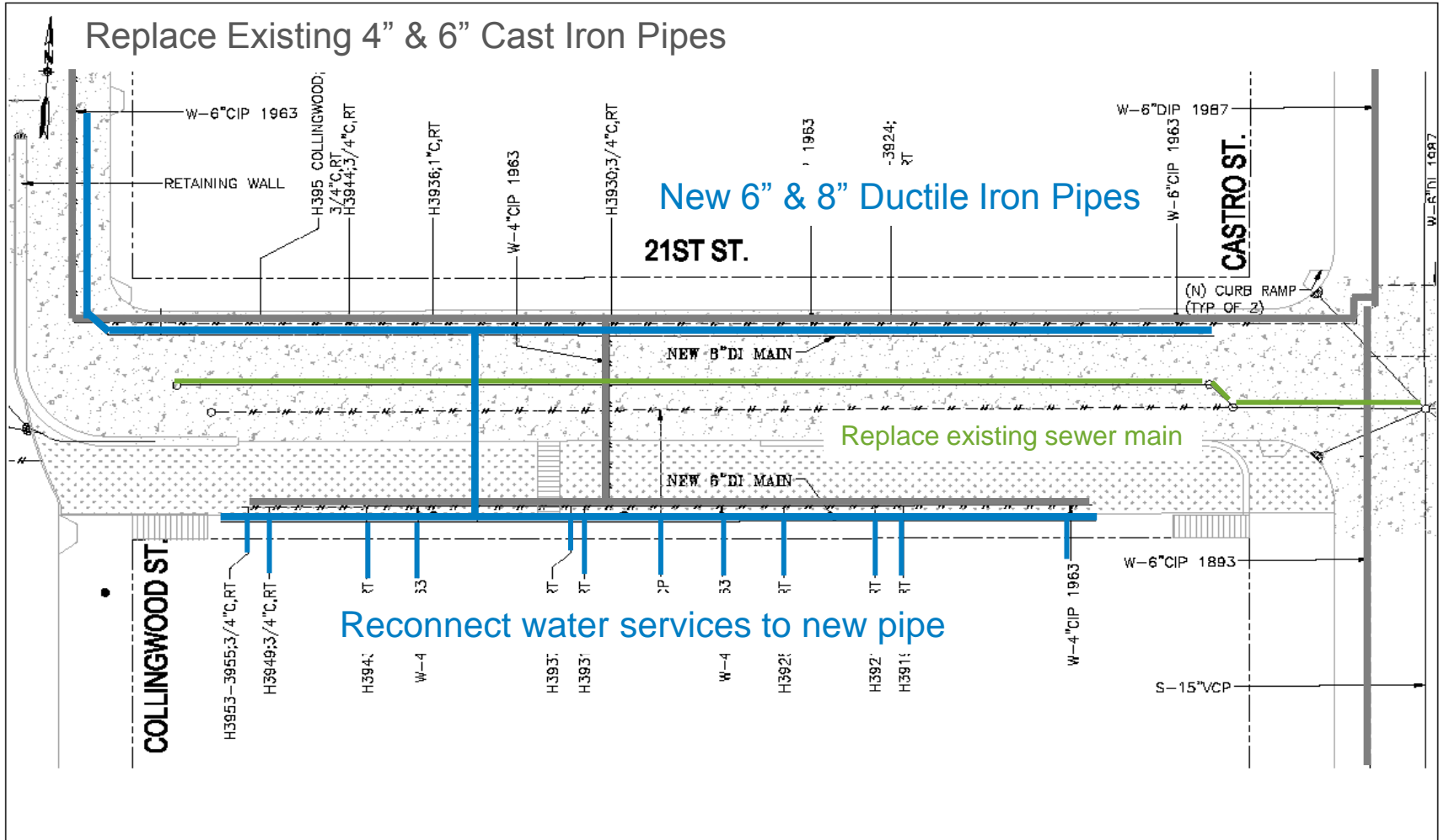
Project Scope

1.4 miles of water main replacement

1 block of sewer replacement

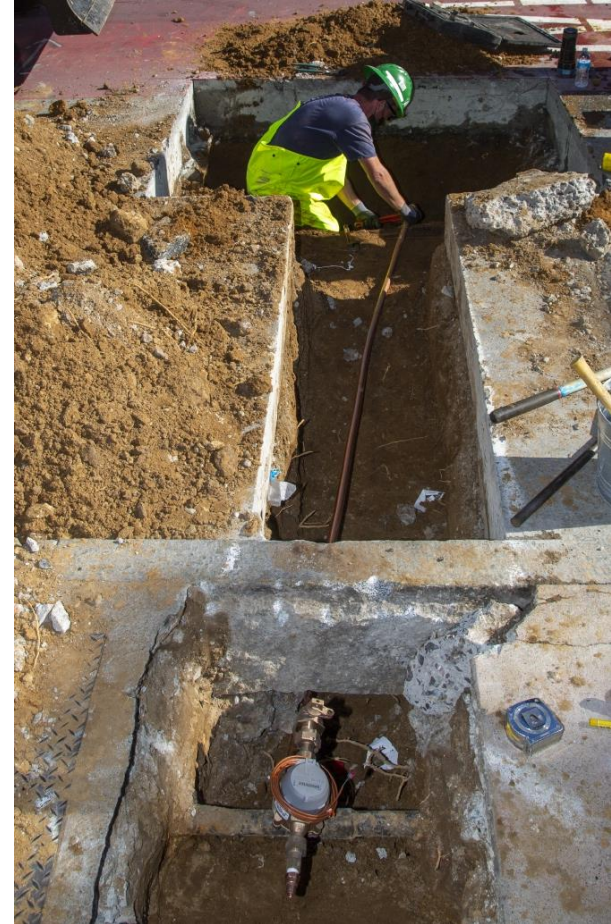


Project Scope (21st Collingwood to Castro)

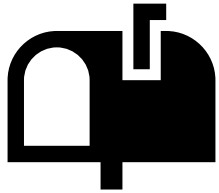


Impacts to Your Water Service

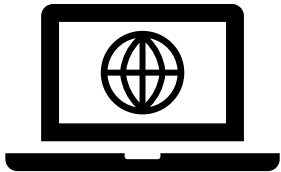
- Temporary interruption of water service when connecting properties to the new water main
- Water service interruption should last no more than 4 hours
- 24-hour notice will be provided



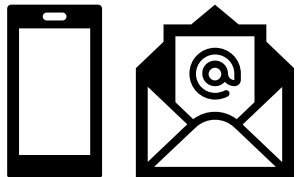
Communication During Construction



Mailers sent prior to construction beginning on your block

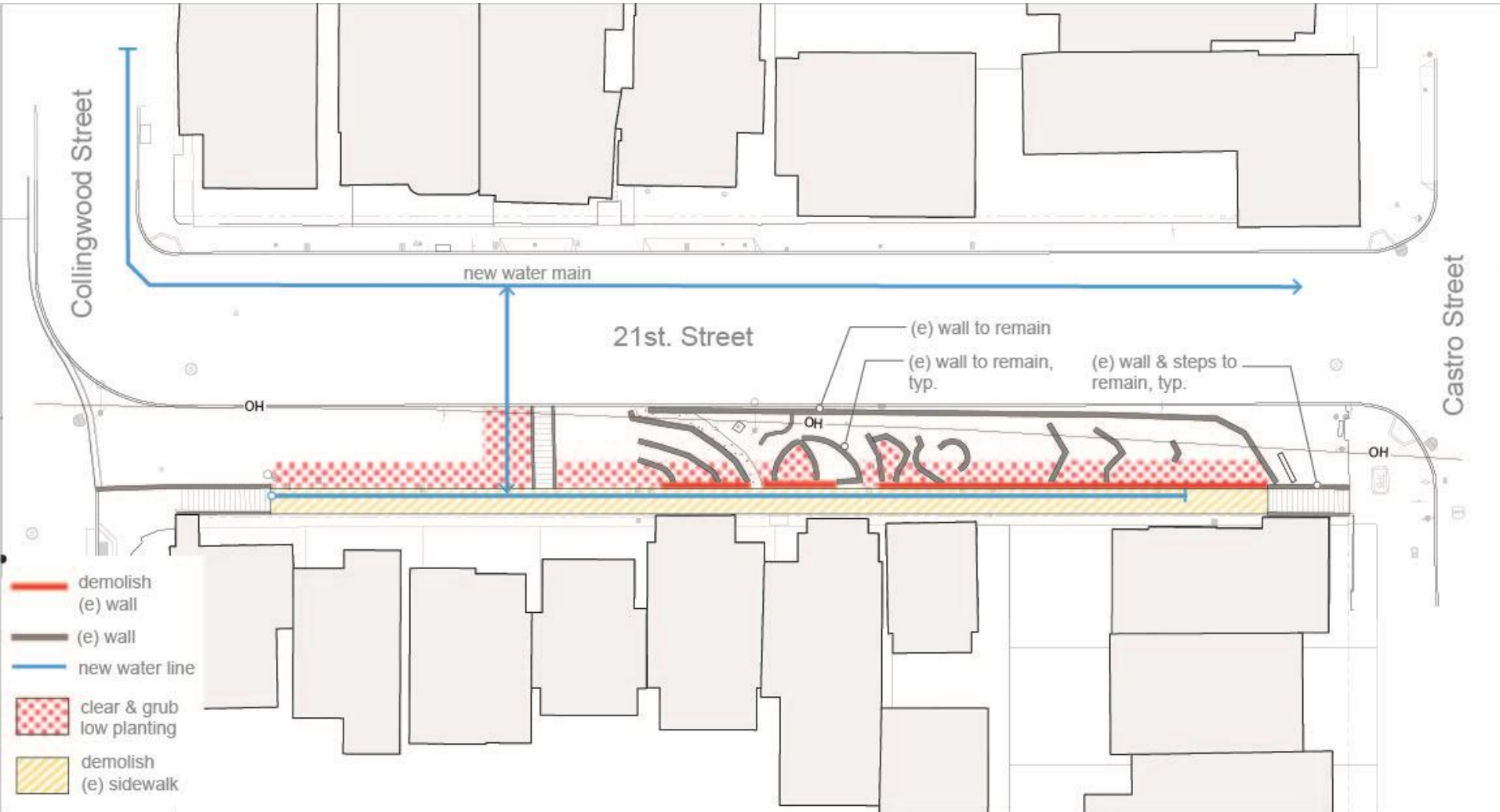


Dedicated project webpage with three-week lookahead schedule



Text and/or email alerts to notify of atypical events such as unplanned water outages or night work (*only sent to those whose info is on file with SFPUC Customer Service*)

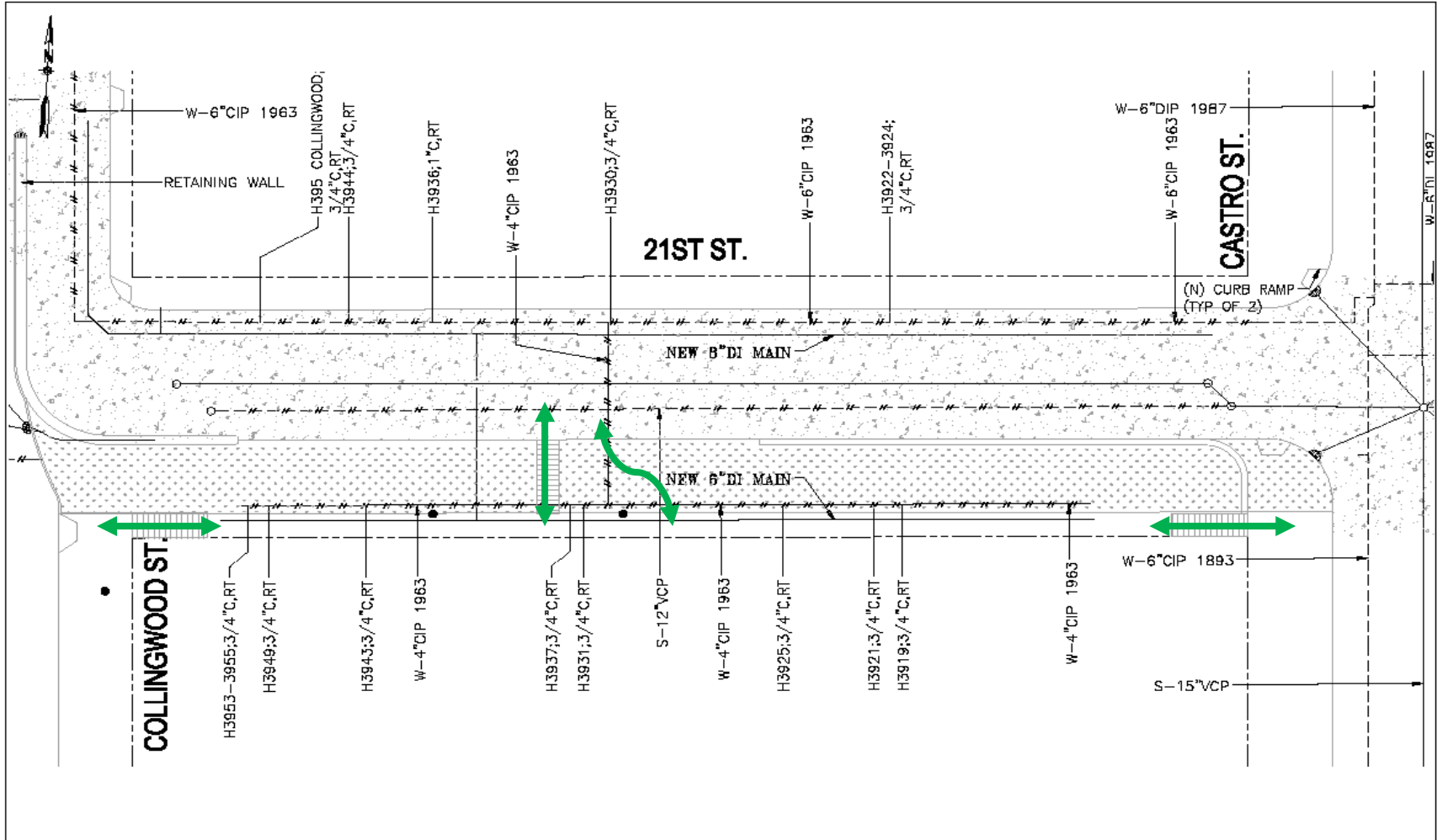
Project Scope



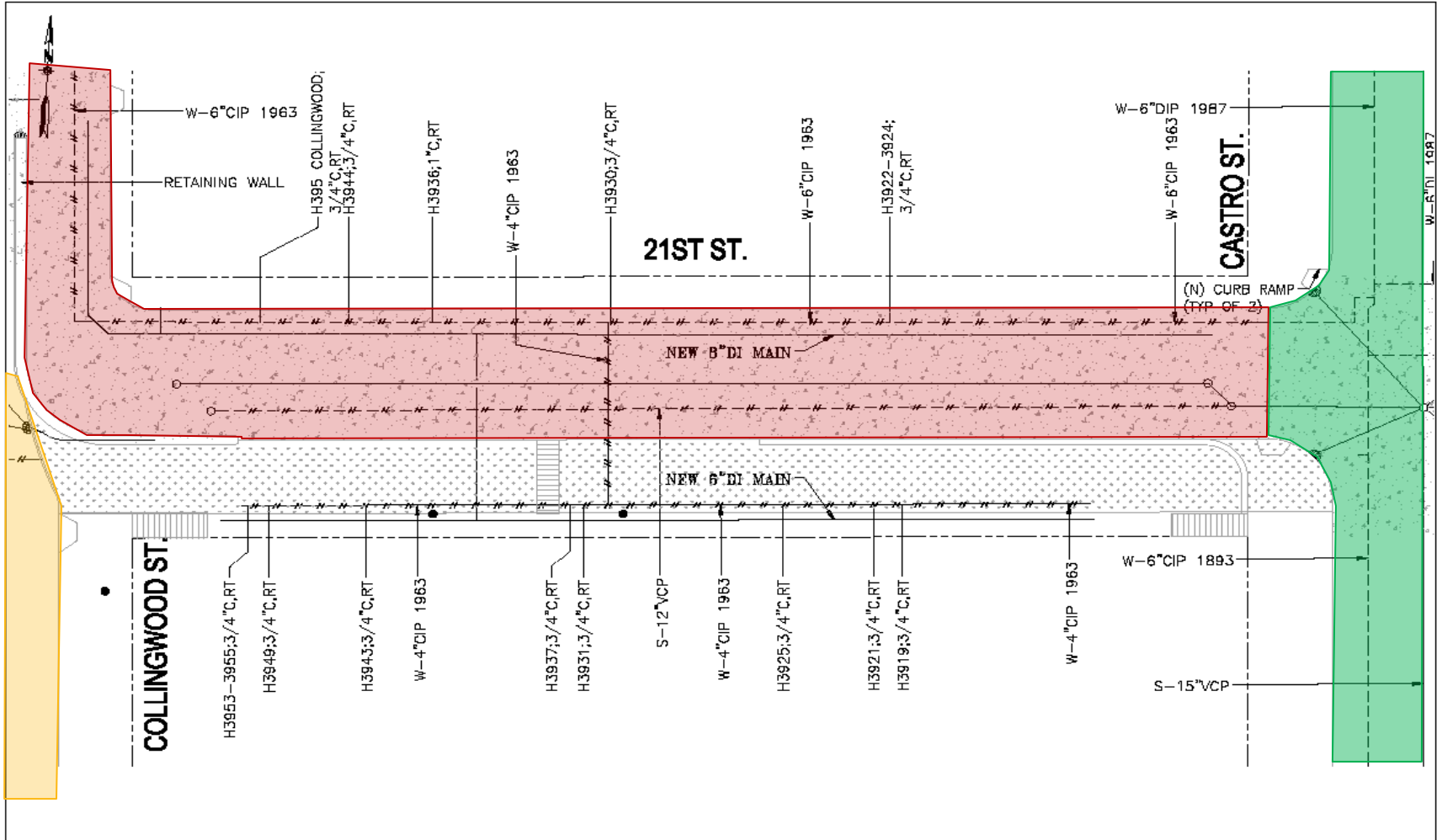
Sidewalk Improvements



Local Access During Construction



Parking During Active Construction

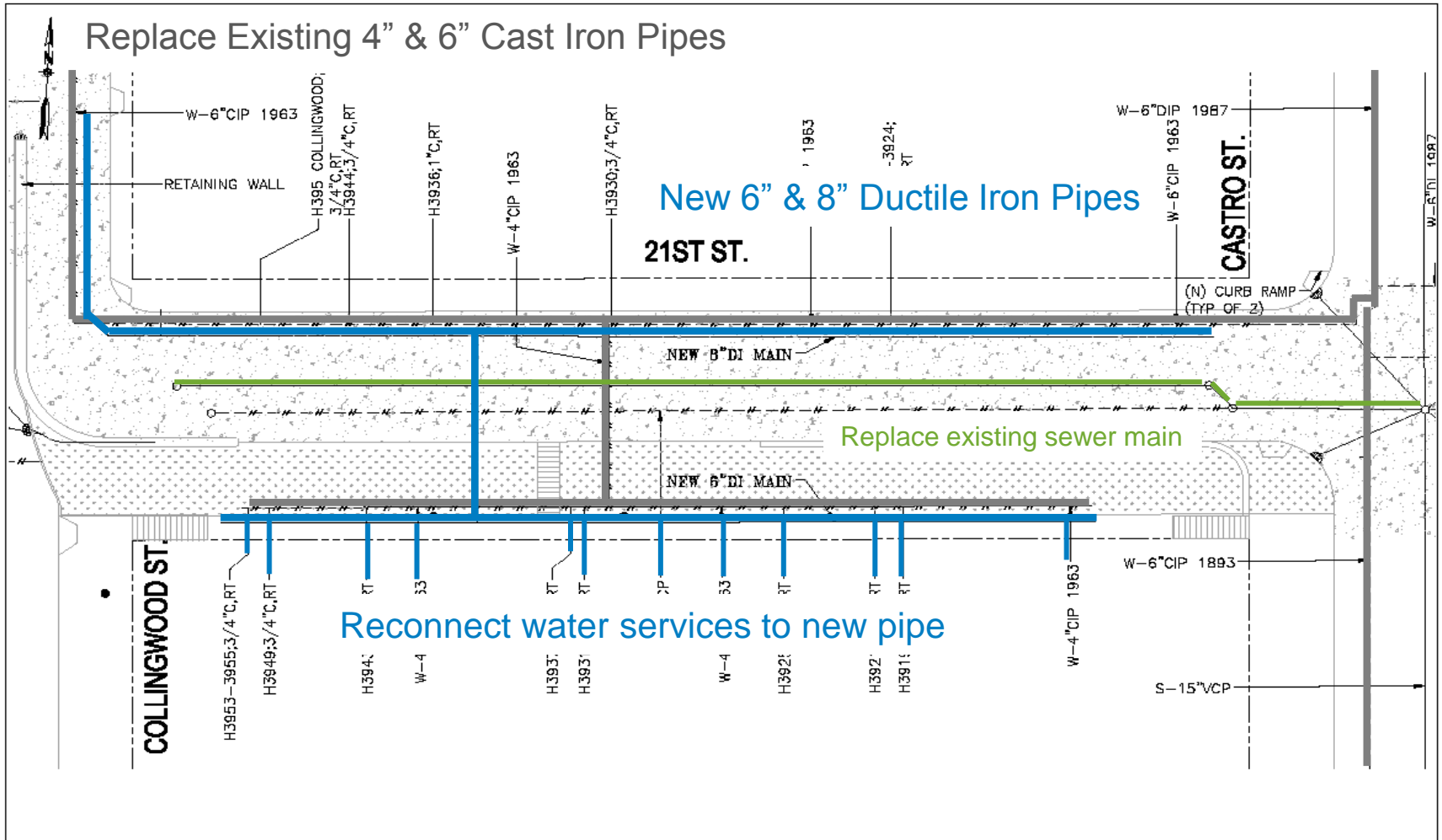


Estimated* Duration:

- Overall Project Duration
 - Winter 2025 – Fall 2027
- Water main replacement
 - ~ 55 working days (on 21st)
 - ~ 65 working days (walkway)
- Sewer & Concrete Street
 - ~ 39 working days
- Landscape Improvements
 - ~ 45 working days

- **Utility Work**
- Sidewalk
- Landscape

Construction Phasing (Utility Work)



UTILITY WORK & EXCAVATION EDGE PROTECTION

1. (E) SIDEWALK
2. TEMPORARY EDGE PROTECTION
3. (E) RESIDENTIAL ENTRY STAIRS
4. EXCAVATION AREA FOR NEW WATERLINE

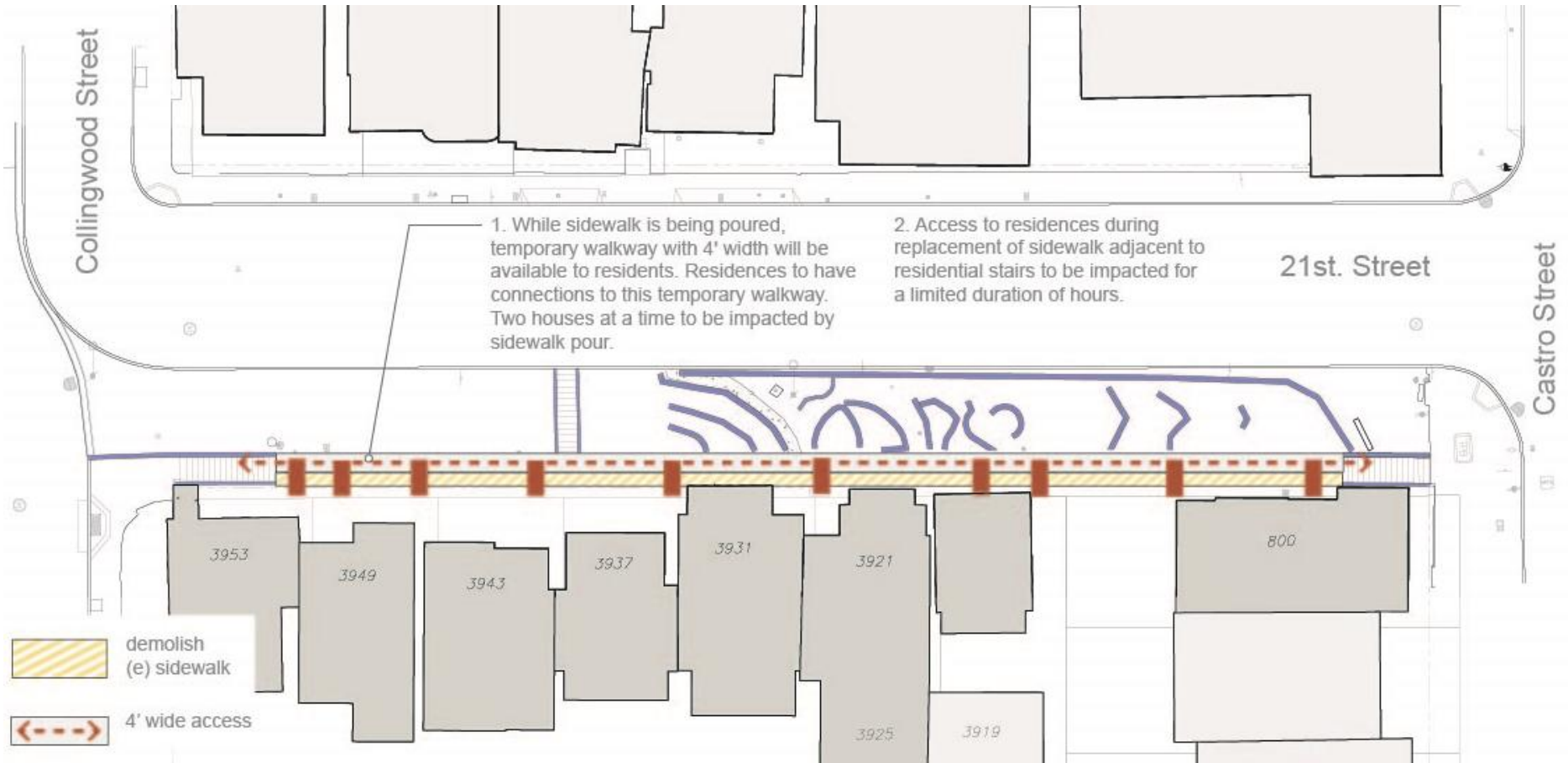




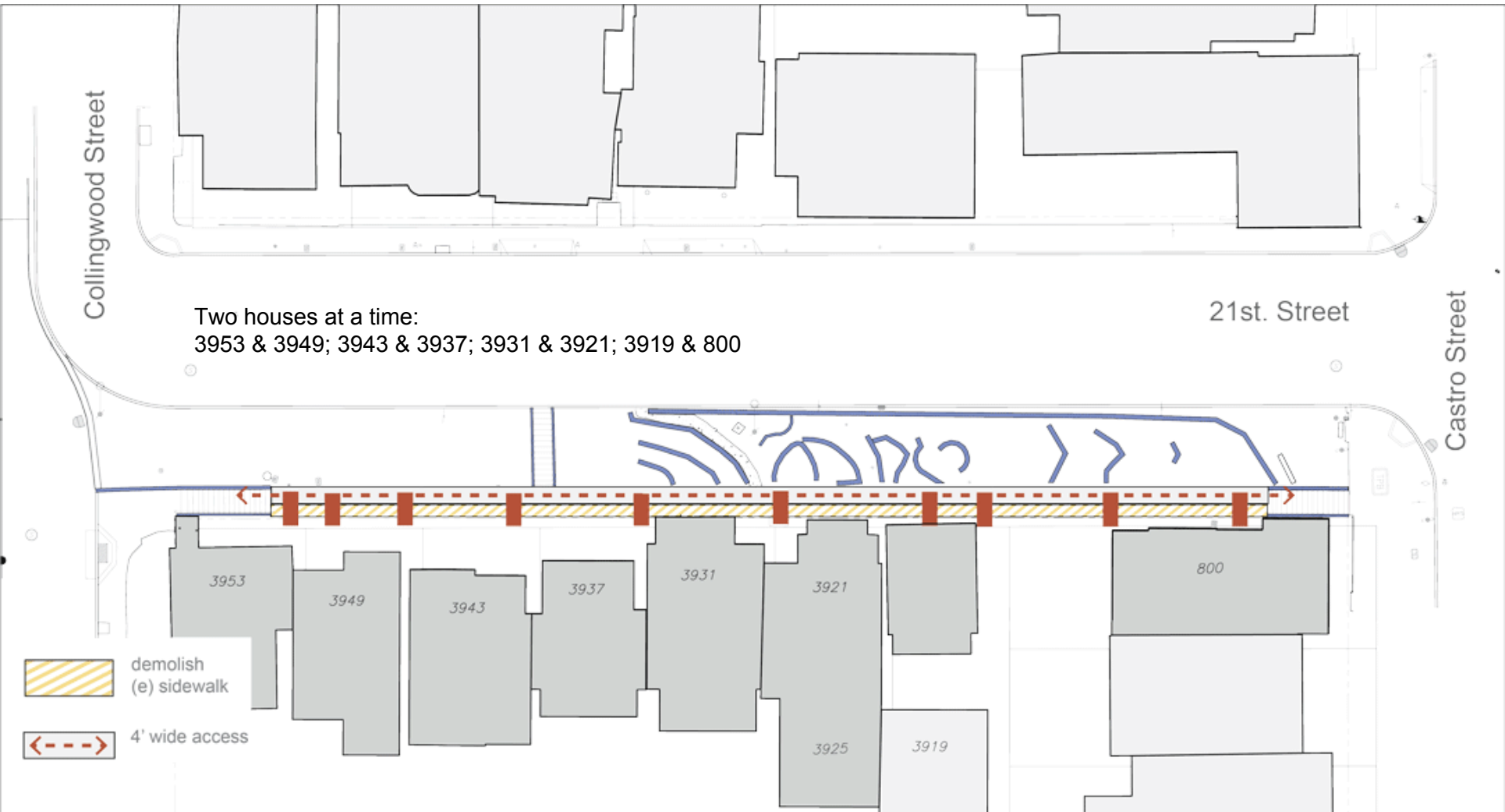
Construction Phasing

- Utility Work
- **Sidewalk**
- Landscape

Construction Phasing (Sidewalk)



Construction Phasing (Sidewalk)



NEW SIDEWALK RESTORATION TEMPORARY RESIDENTIAL ACCESS

1. (E) SIDEWALK
2. NEW TEMPORARY WALKWAY
3. (E) RESIDENTIAL ENTRY STAIRS
4. SIDEWALK POUR - 2 RESIDENCES IMPACTED AT A TIME



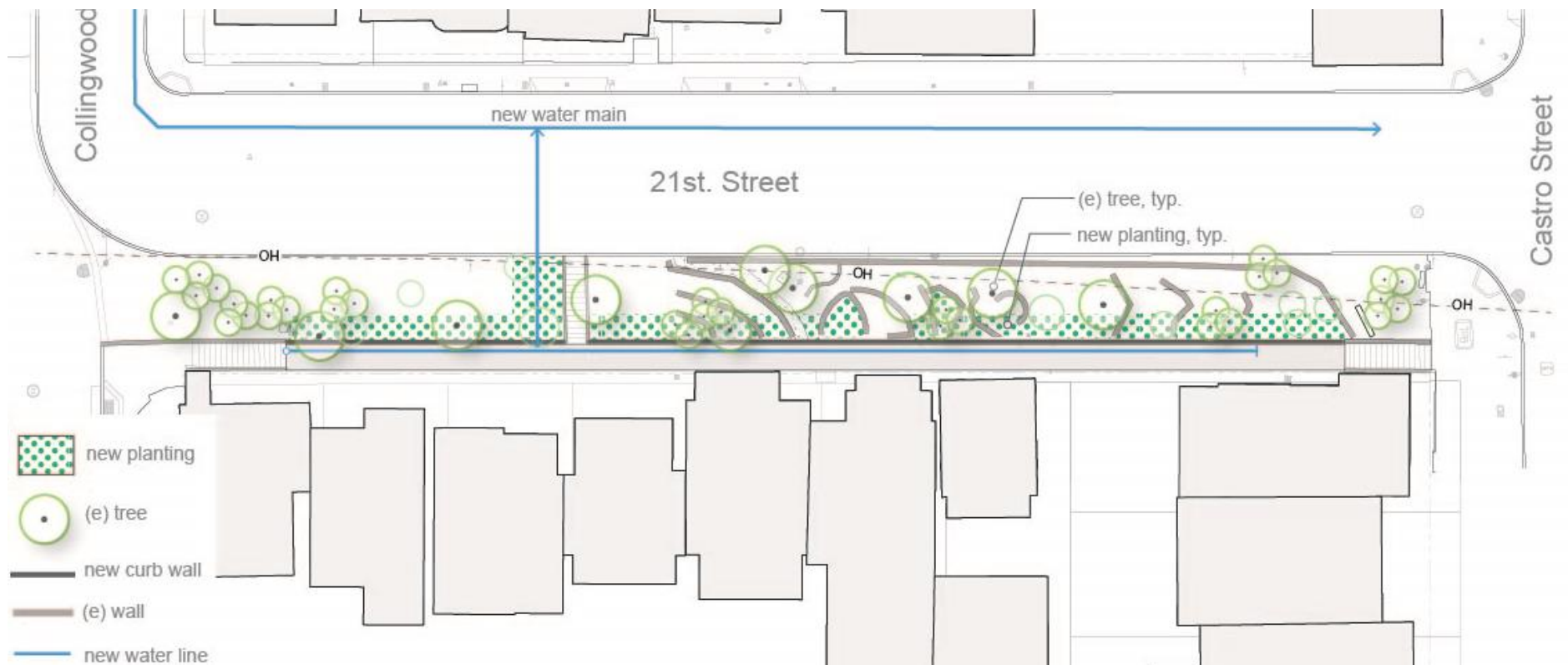


Construction Phasing

- Utility Work
- Sidewalk
- **Landscape**

Construction Phasing (Landscape)

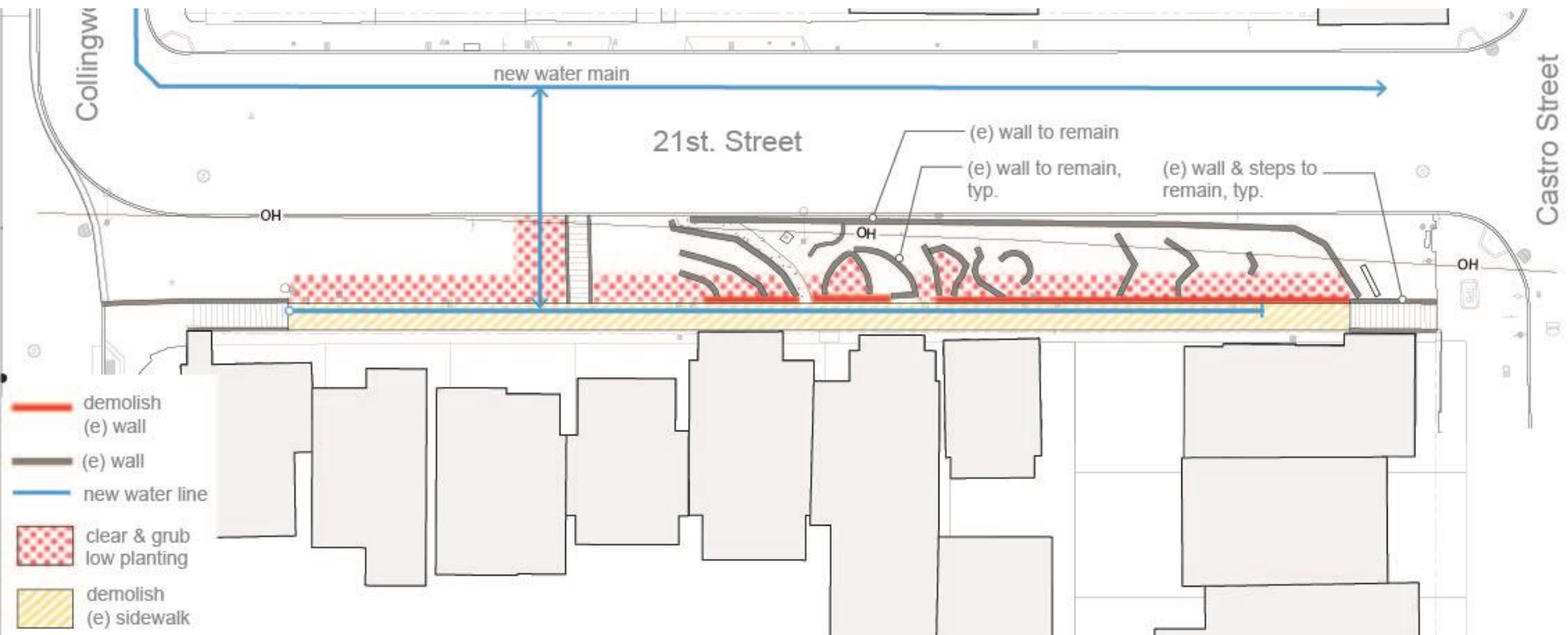
- Future Landscape planting



Items for Input: Existing Retaining Walls

■ Urbanite walls

- Existing walls functionally replaced by curb
- Portion of walls may be removed during Demo and construction of Irrigation
- Current plan is to retain and reuse existing material. Replace in kind?



Items for Input: Existing Retaining Walls

- Existing Urbanite Wall and Edging



Items for Input: Irrigation & Maintenance

- Irrigation Impacts from Construction
 - Irrigation components impacted on north side of sidewalk
 - Water access for existing plants unavailable during construction

- Irrigation restoration
 - Residential water connection
 - Placement of irrigation line to water newly planted plants
 - Replaced irrigation will also water plants that are outside of construction zone if this irrigation has been damaged.
 - Acceptance of residents and/or community group for maintenance responsibility

Items for Input: Landscaping

- **Disturbance**
 - Impacts to planting at existing stairs and within 3-4' of sidewalk replacement areas
 - Protection of existing trees and large shrubs

- **Replacement**
 - Existing wall reconstruction as requested
 - Irrigation – to match extents of new planting

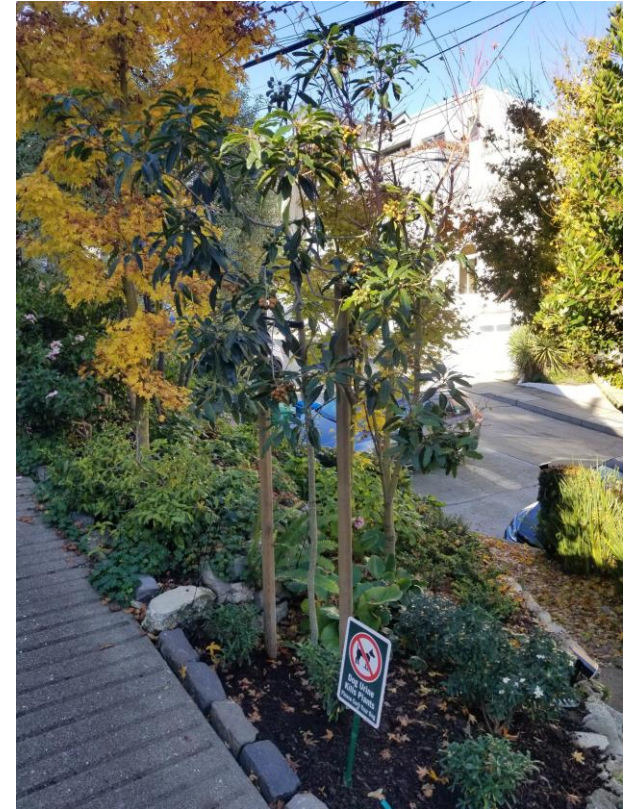
- **Restoration**
 - Planting
 - Irrigation

Items for Input: Tree Impacts Based on Assumed Construction Impacts



Items for Input: Tree Impacts Based on Assumed Construction Impacts

- Newly planted tree
 - Construction may retain for transplanting
 - Demo tree and replant with a new tree

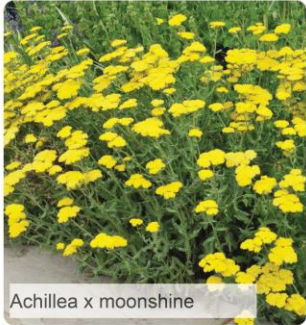


Items for Input: Planting

- Trees
 - Trees not to be removed will be monitored by the Bureau of Urban Forestry (BUF)
 - Tree selection replacement through resident input

- Shrubs/Forbs/Grasses
 - Some shrubs per Demolition assessment will be removed
 - Replace in kind?
 - Plant Selection
 - Plant requests
 - Emphasis on pollinator-friendly species

Items for Input: Planting Species



Achillea x moonshine



Iris douglasiana



Penstemon heterophyllus



Pyrus kawakamii

TREE



Helleborus foetidus



Fragaria chiloensis



Maianthemum dilatatum



Carpenteria californica

MEDIUM, LARGE SHRUBS



Frangula californica



Acanthus mollis 'Oak Leaf'



festuca glauca 'elijah blue'



Helictotrichon sempervirens

SHRUBS, GROUNDCOVERS, GRASSES

Next Steps

- Follow-up Field Meeting
- Survey for Your Input
 - Will be available 12/13/23 thru 12/17/23
 - www.sfpuc.org/21stStreetWater

Questions

- Items for Input / Feedback
 - Existing Retaining Walls
 - Irrigation & Maintenance
 - Landscaping
 - Plant Species



San Francisco
Water Power Sewer

THANK YOU.

Local Water Conveyance/Distribution System Program