



## SUMMARY FOR AFTER SCHOOL ENGAGEMENT AT A.P. GIANNINI MIDDLE SCHOOL

---

### *School Event – Musical Performance*

*Meeting Date: February 20<sup>th</sup> 2025*

*Time: 4:15 - 6:00pm*

*Location: AP Giannini*

*Number of Participants: ~ 40 (parents, students, and teachers)*

### Project Team in Attendance:

Sarah Bloom, San Francisco Public Utilities Commission, Urban Watershed Planning Division

Patricia Algara, BASE Landscape Architecture

Hannah Greendorfer, BASE Landscape Architecture

---

### NOTES FROM PARTICIPANTS

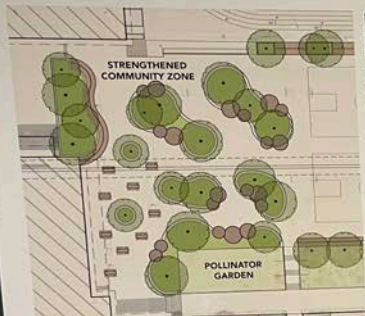
- Parents and families expressed overall excitement for the initial concept ideas
- Strong support for removing asphalt planters to expand the lunch area and add shade opportunities
- Preference for precedent photos that highlight natural materials for seating platforms, log steppers, and terracing
- Interest in adding tennis courts if space allows
- One mention of St. Anne's bioswales as a successful example for planting choices
- Positive feedback on additional shade, the strengthened community zone, play slopes, and expanded seating opportunities (platforms, planter edge seating, multiuse play tables, and log steppers)
- Pollinator Garden Club: Students and parent volunteers have invested significant effort into the existing pollinator gardens and want these areas preserved and enhanced with specific species – mentioned and documented in other engagements as well
- Excitement for the soccer/playfield
- Interest in permeable pavers or other ways to incorporate water infiltration in hardscape areas
- Likes that the design preserves the two basketball courts in the lower yard

- Concern about difficulty transporting garden supplies like wheelbarrows and planting materials down the stairs to the APG garden (though this is outside the project scope)
- Positive feedback on the flexible space for tag and running
- Question about the delineation of space for ball sports
- Broken fence identified at the southwest corner of the site

## PHOTOS OF BOARDS + ENGAGEMENT



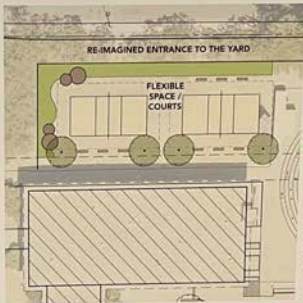
SCHOOLYARD EARLY CONCEPT ENLARGEMENTS | A.P. GIANNINI MS GREEN INFRASTRUCTURE PROJECT



- STRENGTHENED COMMUNITY ZONE**
- EXPAND LUNCH + COMMUNITY AREA
  - PROVIDE SHADE TREES
  - FLEXIBLE SEATING
  - OPPORTUNITIES FOR STORMWATER STORAGE AND/OR INFILTRATION
  - DIVERSIFY SOCIAL SPACES FOR GATHERING + ANNOUNCEMENTS
  - PLANTERS WITH SEAT EDGE
  - ENHANCE ALREADY ESTABLISHED POLLINATOR GARDEN



EXISTING SITE PHOTOS



**RE-IMAGINED ENTRANCE TO THE YARD**

- RELOCATED VOLLEYBALL COURTS
- WELCOMING ENTRANCE TO THE YARD
- SEATING AND SHADE
- BIORETENTION PLANTERS
- ALLEVIATE FLOODING ISSUES



EXISTING SITE PHOTOS



SCHOOLYARD EARLY CONCEPT | A.P. GIANNINI MS GREEN INFRASTRUCTURE PROJECT



- tag + running around, more planting  
- too many basketball courts currently

Question of delineation or space for sports w/ balls

excited about the soccer field and the play slopes

like the terraced lunch w/ more seating and shade

Use the two basketball courts to create a new social space, different to get involved about

strengthened space for water infiltration

question about the soccer field



