



SUMMARY FOR PTA COMMUNITY MEETING 2

Meeting Date: Feb 4th 2025

Time: 7:00 - 7:30pm (30 minutes)

Location: Virtual

Number of Participants: ~ 30 people

AGENDA

SFPUC Welcome + Intro (5 minutes)

BASE Presentation of Massing Concepts (10 minutes)

-Summary of Engagement + Insights

-Massing of Space Discussion

-Initial Concept Ideas for Key Areas

Questions + Feedback (10 minutes)

Wrap Up + Next Steps (5 minutes)

IN ATTENDANCE

Admin, Parents, and Teachers:

Mandy	Linda Tsang	Michelle Chan
Emma	Karen Hadary	Hayley
Janet Wong	Alvin Li	Samuli Kekki
Susan (MW)	Tai Schooman	Julie
Jonathan Crosby	Beth Ryan	Jennie Chang
Nancy Cogan	Allison Dean	Katherine Burton
Carly Chillmon	Jen Bhalla	Ibone Santiago
Jen Bhalla	Cat Sommer	Leigh Meredith
Katherine Burton	Daniela	

Project Team:

Sarah Bloom, SPPUC Wastewater

Will Logsdon, SFPUC Wastewater

Hans Tremmel, Brown and Caldwell

Patricia Algara, BASE Landscape Architecture

Hannah Greendorfer, BASE Landscape Architecture

NOTES FROM PARTICIPANTS + PRESENTATION SLIDES BOARDS

- A parent suggested installing a large net (like those at SI High School) around the soccer field to prevent balls from flying out
- Concerns were raised that play balls currently cause problems for both students and teachers
- A participant asked why AP Giannini was chosen over other middle schools, given its already high desirability as a school - AP Giannini was selected due to its sandy soil, ideal for stormwater management, and its large yard acreage making it a strong candidate for a PUC led capital project
- A parent questioned whether the existing garden area had been considered for stormwater capture, noting it already absorbs water well but could be updated
- The garden it is not accessible during recess and lunch due to supervision issues, limiting its usability as a student gathering space
- A parent asked whether seating would be available near the new volleyball courts, confirmed that seating is a part of redesign, with a mix of benches and round seating areas
- A concern was raised about water pooling and flooding in the upper parking lot during heavy rains - BASE acknowledged this as a good opportunity for a bioswale or other stormwater solution, though it was unclear if it was currently within the project's scope
- A participant asked about timeline and student access during construction - the project is still in the conceptual design phase, with construction not expected until summer 2027 after final design, permitting, and bidding
- Additional opportunities for feedback:
 - **February 20th** – Community engagement during the Newsies musical event, where project boards will be displayed
 - **QR Code / Interactive Map** – A digital tool will be available for community members to provide further comments
- The final concept design will be refined based on feedback before another presentation to the community

KEY INSIGHTS FROM ENGAGEMENT GATHERED | A.P. GIANNINI MS GREEN INFRASTRUCTURE PROJECT

General Yard Observations

- The yard is heavily used, with approximately 1,100 students during lunch
- No shade available
- Limited seating options
- Lunch tables are multi-use and full during lunch
- The yard is loud, with no defined quiet areas
- Limited green space
- Overcrowding and dominance of older and male students leave younger and female students with fewer options

Safety Hazards:

- Slippery surfaces in the lower and upper yard
- Uneven surfaces and loose gravel in the lower yard cause frequent falls
- Volleyball courts are uneven and workout equipment is hazardous

Programming:

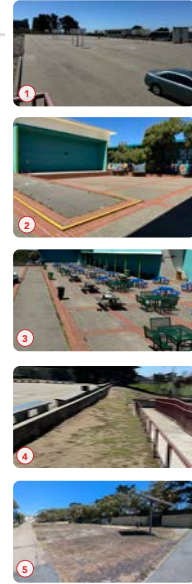
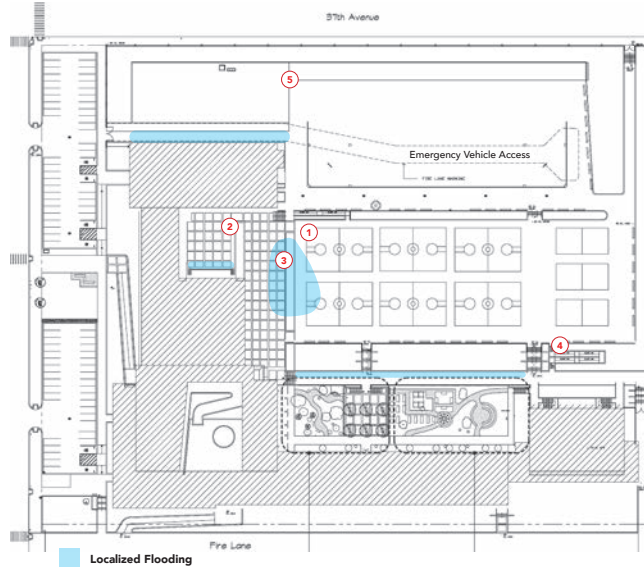
- Too many basketball courts, no diversity of play
- PE needs 6 separate areas for class, each approx. the size of 2 basketball courts
- Activities that can happen in a flexible space: Dance, Yoga, Workout Circuits, Park Games
- Activities that require hardscape: Bikes, Ripsticks, Basketball, Pickleball, Tennis, Handball, Floor Hockey, Four Square, Track
- PE staff prefer open, flexible spaces without barriers to accommodate various activities
- Interest in softer surfaces for football, soccer, and lacrosse
- Interest in bringing in cross training and the bike program back, but conflicts with other activities pose challenges
- Creative elements like bouldering and table tennis have been suggested

Flooding Issues

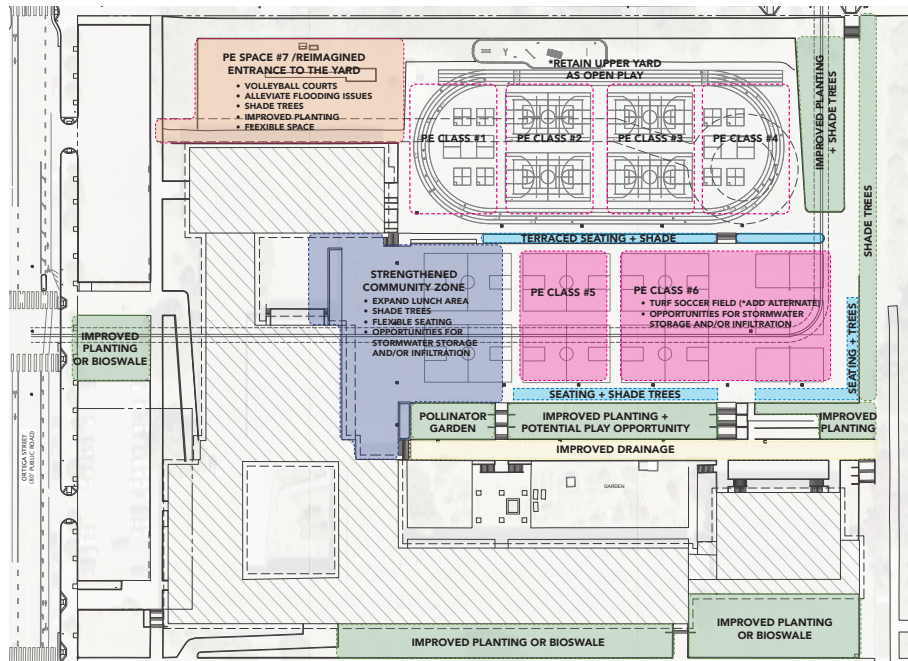
- Pooling water along the walkway ("Lake APG"), the lower yard, lunch area, and near the long jump

Accessibility

- A single, long, and steep ramp between levels restricts accessibility
- The current yard equipment storage arrangement leads to crowding at lunch



SCHOOLYARD MASSING CONCEPT | A.P. GIANNINI MS GREEN INFRASTRUCTURE PROJECT



1/2025

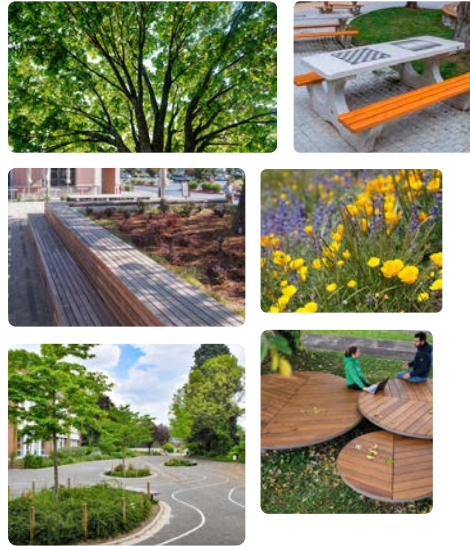
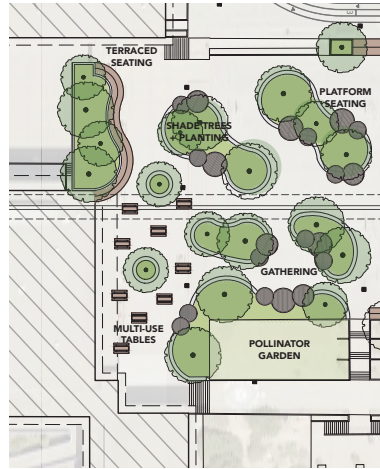
SCHOOLYARD MASSING CONCEPT | A.P. GIANNINI MS GREEN INFRASTRUCTURE PROJECT

STRENGTHENED COMMUNITY ZONE

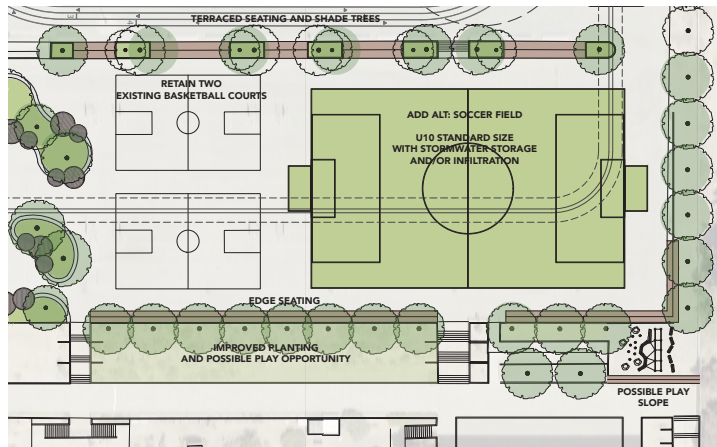
- EXPAND LUNCH + COMMUNITY AREA
- PROVIDE SHADE TREES
- FLEXIBLE SEATING
- OPPORTUNITIES FOR STORMWATER STORAGE AND/OR INFILTRATION
- DIVERSIFY SOCIAL SPACES FOR GATHERING + ANNOUNCEMENTS
- PLANTERS WITH SEAT EDGE
- ENHANCE ALREADY ESTABLISHED POLLINATOR GARDEN



EXISTING SITE PHOTOS



SCHOOLYARD MASSING CONCEPT | A.P. GIANNINI MS GREEN INFRASTRUCTURE PROJECT

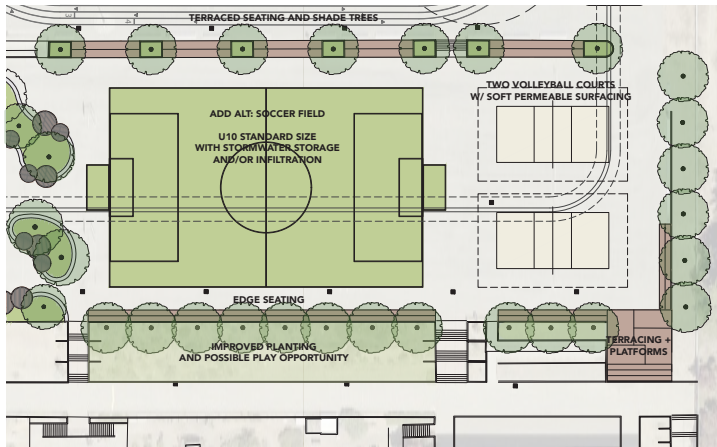


LOWER YARD IMPROVEMENTS: MASSING OPTION 1

- PROPOSED TURF SOCCER FIELD W/ STORMWATER STORAGE AND/OR INFILTRATION
- MAINTAIN TWO EXISTING BASKETBALL COURTS
- BREAK DOWN EXISTING SLOPE FOR TERRACED SEATING AND SHADE TREES
- EDGE SEATING
- IMPROVED PLANTING, DROUGHT TOLERANT, DURABLE SPECIES
- POTENTIAL PLAY OPPORTUNITY ON EXISTING SLOPE, SUCH AS ROPES OR OBSTACLES



SCHOOLYARD MASSING CONCEPT | A.P. GIANNINI MS GREEN INFRASTRUCTURE PROJECT



LOWER YARD IMPROVEMENTS: MASSING OPTION 2

- PROPOSED TURF SOCCER FIELD W/ STORMWATER STORAGE AND/OR INFILTRATION
- MAINTAIN TWO VOLLEYBALL COURTS W/ SOFT PERMEABLE SURFACING
- CLEAR WALK BETWEEN LOWER YARD AND UPPER YARD
- BREAK DOWN EXISTING SLOPE FOR TERRACED SEATING AND SHADE TREES
- EDGE SEATING
- IMPROVED PLANTING, DROUGHT TOLERANT, DURABLE SPECIES
- POTENTIAL PLAY OPPORTUNITY ON EXISTING SLOPE, SUCH AS ROPES OR OBSTACLES



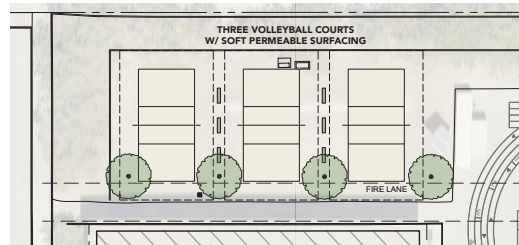
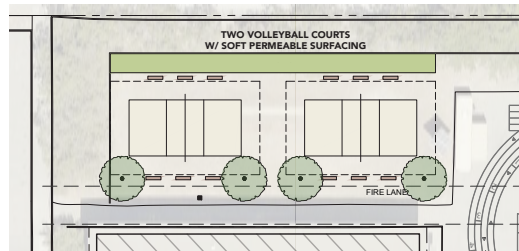
SCHOOLYARD MASSING CONCEPT | A.P. GIANNINI MS GREEN INFRASTRUCTURE PROJECT

RE-IMAGINED ENTRANCE TO THE YARD

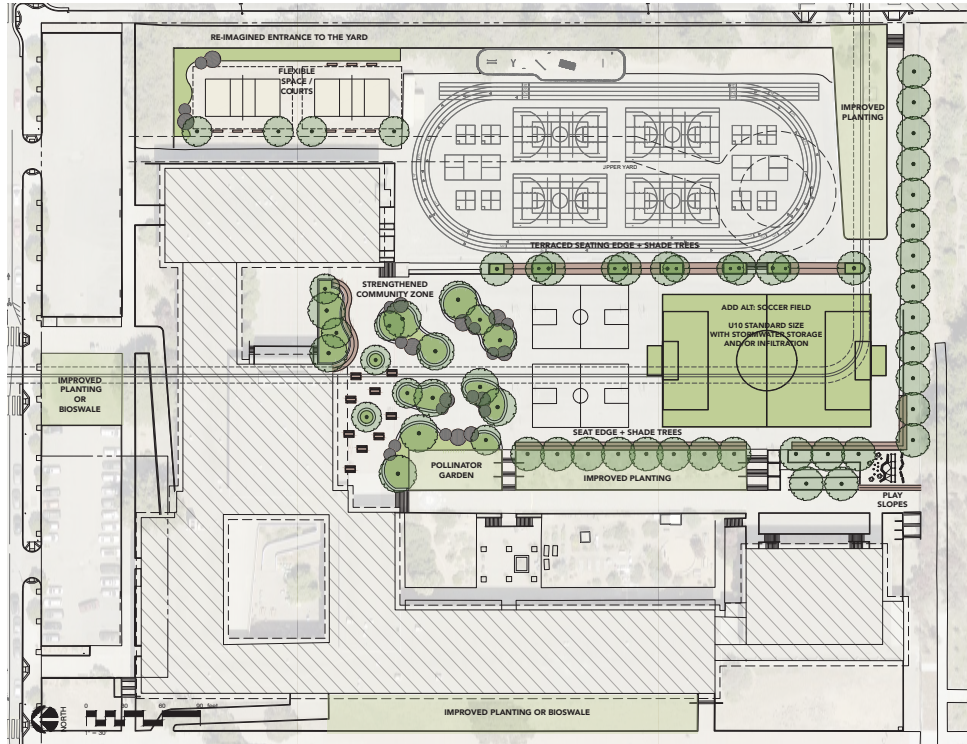
- RELOCATED VOLLEYBALL COURTS
- WELCOMING ENTRANCE TO THE YARD
- SEATING AND SHADE
- BIORETENTION PLANTERS
- ALLEVIATE FLOODING ISSUES



EXISTING SITE PHOTOS



SCHOOLYARD EARLY CONCEPT | A.P. GIANNINI MS GREEN INFRASTRUCTURE PROJECT



QUESTIONS AND FEEDBACK | A.P. GIANNINI MS GREEN INFRASTRUCTURE PROJECT

1. WHAT ARE YOUR INITIAL REACTIONS TO THE OVERALL LAYOUT AND ORGANIZATION OF THE SPACE?
2. DOES THE MASSING DIAGRAM REFLECT THE PRIORITIES AND NEEDS IDENTIFIED IN EARLIER MEETINGS?
3. DO THE PROPOSED GATHERING AREAS, PLAY ZONES, AND PASSIVE VS. ACTIVE DESIGNATIONS MEET SCHOOL'S NEEDS?
4. FOLLOW UP CONVERSATIONS
 - PTA PROVIDED TEACHER BREAKFAST 2/5
 - STUDENT LUNCH TIME TABLING 2/7
 - EVENING SCHOOL EVENT 2/20

