



SUMMARY FOR TEACHERS BREAKFAST AT A.P. GIANNINI MIDDLE SCHOOL

Teachers Breakfast Engagement

Meeting Date: February 5th 2025

Time: 8:30-9:30am

Location: AP Giannini

*Number of Participants: ~ 35 (admin
and teachers)*

Project Team in Attendance:

Will Logsdon, San Francisco Public Utilities Commission, Urban Watershed Planning Division

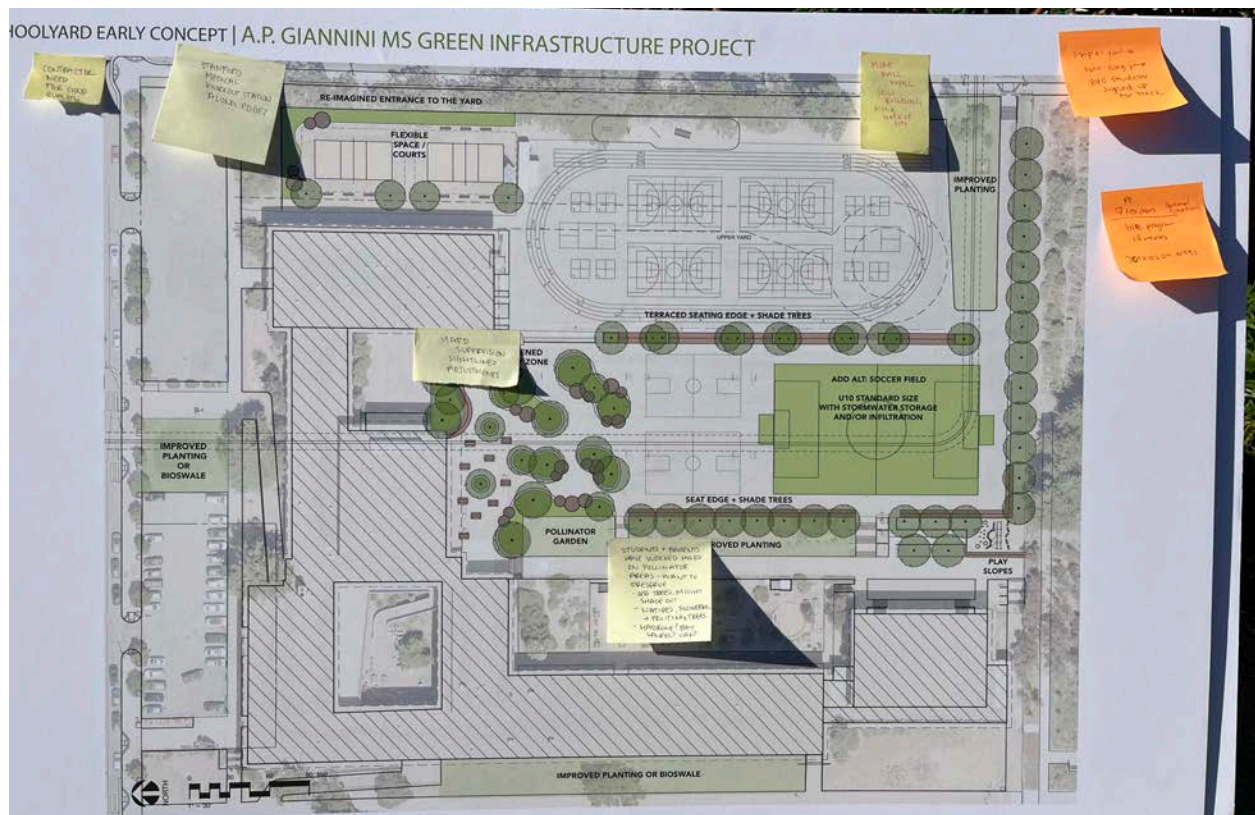
Patricia Algara, BASE Landscape Architecture

Hannah Greendorfer, BASE Landscape Architecture

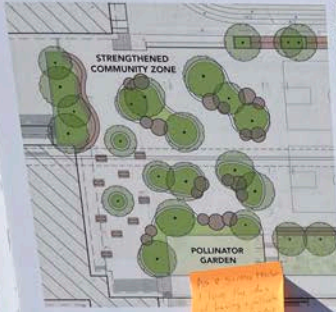
NOTES FROM PARTICIPANTS + BOARDS

- Overall excitement for the initial concept ideas, like the additional shade, the strengthened community zone, play slopes, and creative seating (platforms, planter edge seating, multiuse play tables, and log steppers)
- Pollinator Garden Club - Students and parent volunteers have invested significant effort into the existing pollinator gardens and would like to see these areas preserved and enhanced with specific species, they meet 1st Sunday of every month
 - Shade Tree: Garden coordinator suggested reducing the number of shade trees in the middle planter to prevent excessive shading of certain plants,
 - Would like to see more flowering and fruiting natives
 - Prefers native shade trees such as madrone, bay laurel, and oak as potential shade tree options to complement the existing garden
 - They mentioned a couple things that would support the garden: irrigation, access to mulch. Sometimes they have to lay down boards from the lower garden and wheel mulch up or carry it in buckets up the stairs
 - The CA Native Pollinator group has planted over 100 plants so far, all with value to various pollinators or birds and with a particular focus on host plants for Lepidoptera
 - **Planting list of existing plants is archived by the design team**
- Important to keep the long jump, over 250 students sign up for track each year

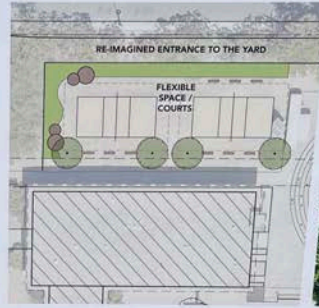
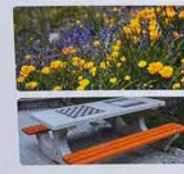
- Bike program is approx. 14 weeks, 30 students on bikes at a time
- Would like to be able to circulate the site for the bike program on a traditional round track
- Need to be mindful of sightlines through planters and where yard duty supervisors could stand during lunch
- Several teachers commented that they loved the play slopes and could be a fun way to circulate the site (just make sure that it is ropes, etc. aimed for middle schoolers)
- More wall ball opportunities, maybe along back side of site?
- Concern for the quality of the contractor during construction
- The science teacher loves the idea of having more pollinator areas of the yard for nature walks and lessons
- There is strong enthusiasm for the proposed terraced seating between the upper and lower yard - PE teachers requested seating on the upper yard side as well, so that it can be utilized by PE classes



SCHOOLYARD EARLY CONCEPT ENLARGEMENTS | A.P. GIANNINI MS GREEN INFRASTRUCTURE PROJECT



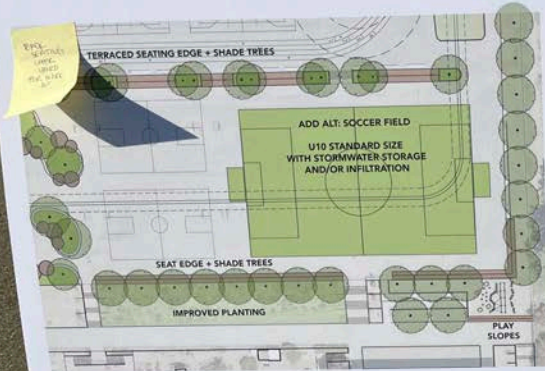
- STRENGTHENED COMMUNITY ZONE**
- EXPAND LUNCH + COMM. AREA
 - PROVIDE SHADE TREES
 - FLEXIBLE SEATING
 - OPPORTUNITIES FOR STORMWATER STORAGE AND/OR INFILTRATION
 - DIVERSIFY SOCIAL SPACES FOR GATHERING + ANNOUNCEMENTS
 - PLANTERS WITH SEAT EDGE
 - ENHANCE ALREADY ESTABLISHED POLLINATOR GARDEN



- RE-IMAGINED ENTRANCE TO THE YARD**
- RELOCATED VOLLEYBALL COURTS
 - WELCOMING ENTRANCE TO THE YARD
 - SEATING AND SHADE
 - BIORETENTION PLANTERS
 - ALLEVIATE FLOODING ISSUES



SCHOOLYARD EARLY CONCEPT ENLARGEMENTS | A.P. GIANNINI MS GREEN INFRASTRUCTURE PROJECT



- LOWER YARD IMPROVEMENTS**
- PROPOSED TURF SOCCER FIELD W/ STORMWATER STORAGE AND/OR INFILTRATION
 - MAINTAIN TWO EXISTING BASKETBALL COURTS
 - BREAK DOWN EXISTING SLOPE FOR TERRACED SEATING AND SHADE TREES
 - EDGE SEATING
 - IMPROVED PLANTING, DROUGHT TOLERANT, DURABLE SPECIES
 - POTENTIAL PLAY OPPORTUNITY ON EXISTING SLOPE, SUCH AS ROPES OR OBSTACLES

