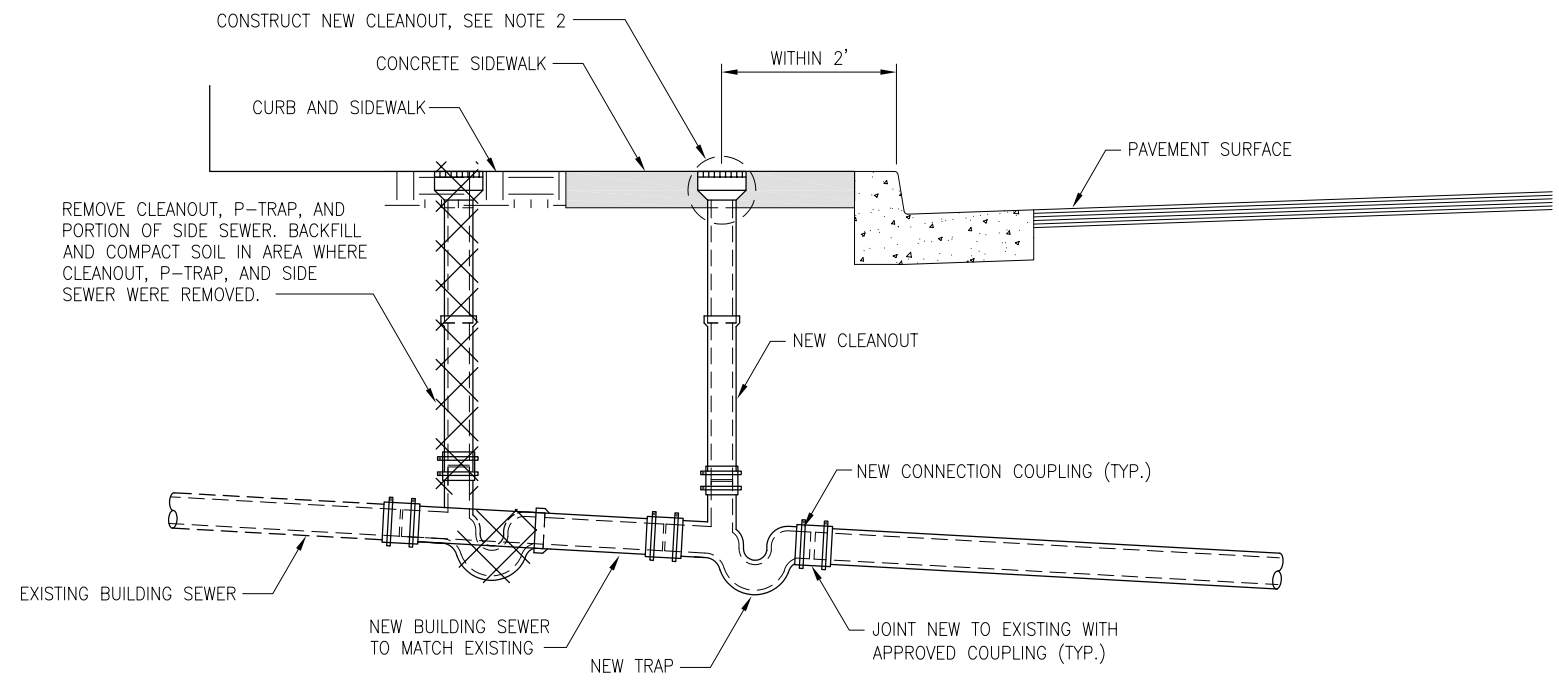


\\woodardclarmann.net\shared\Projects\RM\CSF\002-SFPUC\002-007-SFPUC\WW\CS-955BIB\Task Order\TO 10 - Sewer Laterals Program Phase 1B - Project Work\Task- Revised Standards and Details Completion\Final Submittal\CAD\RevisedSewer Config Figures.dwg



NOTES:

- 1. FOR TYPICAL INSTALLATION OF SEWER LATERAL IN COMBINED SEWER SYSTEM AND SANITARY SEWER SYSTEM, SEE DRAWINGS NO. 5 AND NO. 7, RESPECTIVELY.
- 2. FOR CLEANOUT ASSEMBLIES THAT ARE LOCATED IN THE VICINITY OF THE PLANTING BED, SEE DRAWINGS NO. 6 AND NO. 8.

RELOCATION OF SEWER LATERAL CLEANOUT DUE TO SIDEWALK WIDENING 2
 NOT TO SCALE

APPLICABLE TO BOTH
 COMBINED AND SANITARY
 SEWER SYSTEMS



**SEWER LATERAL
 STANDARD DETAILS**
 SAN FRANCISCO PUBLIC UTILITIES COMMISSION

DATE MAY 2017	REVISION 1.0	REVISED
------------------	-----------------	---------

SEWER LATERAL RELOCATION DETAIL 2